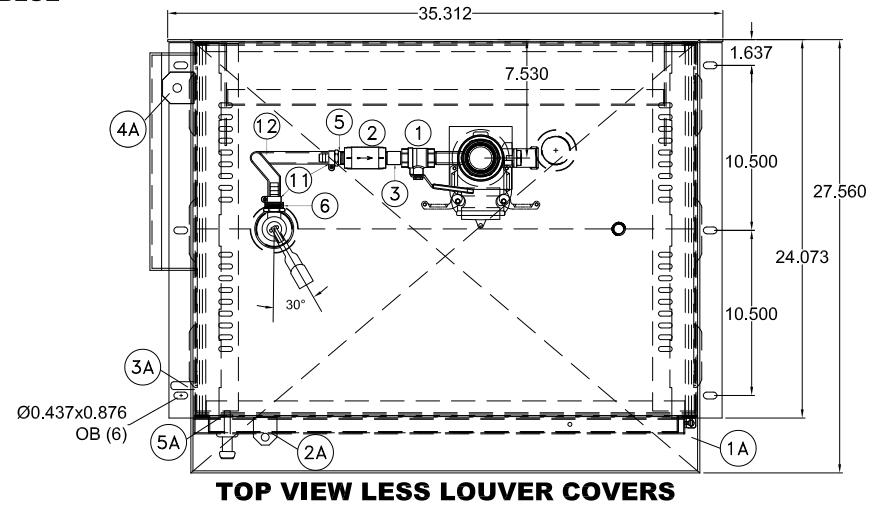


FFP-2 FULL SIZE FUEL PORT 2" (PN. 50002629)

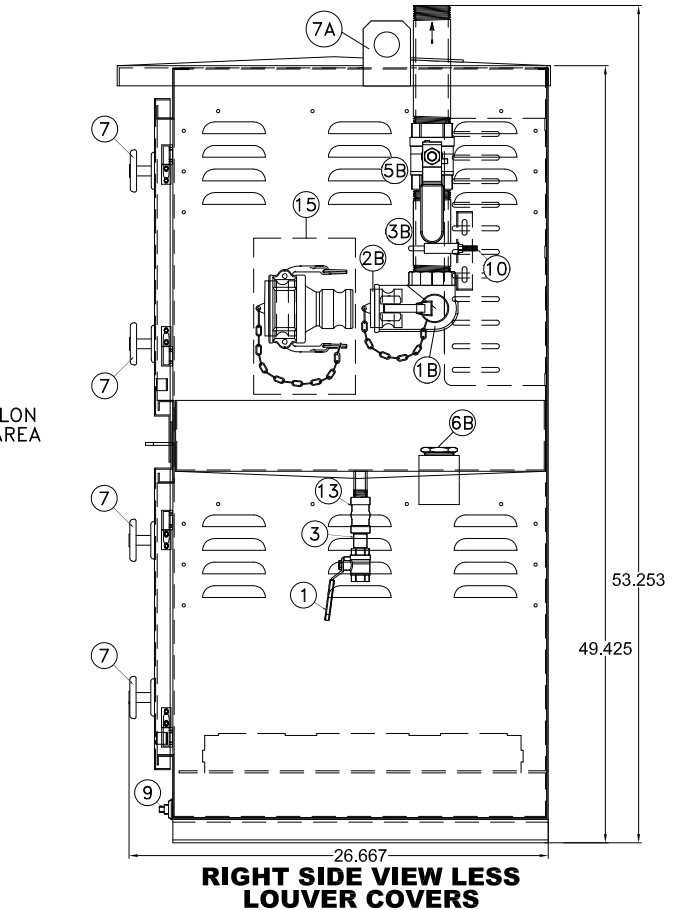
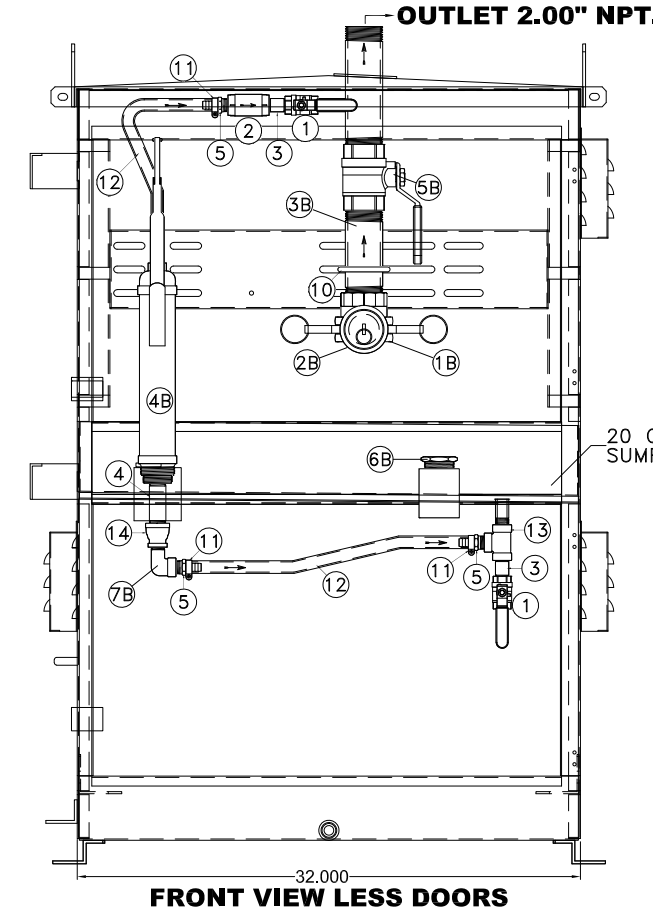
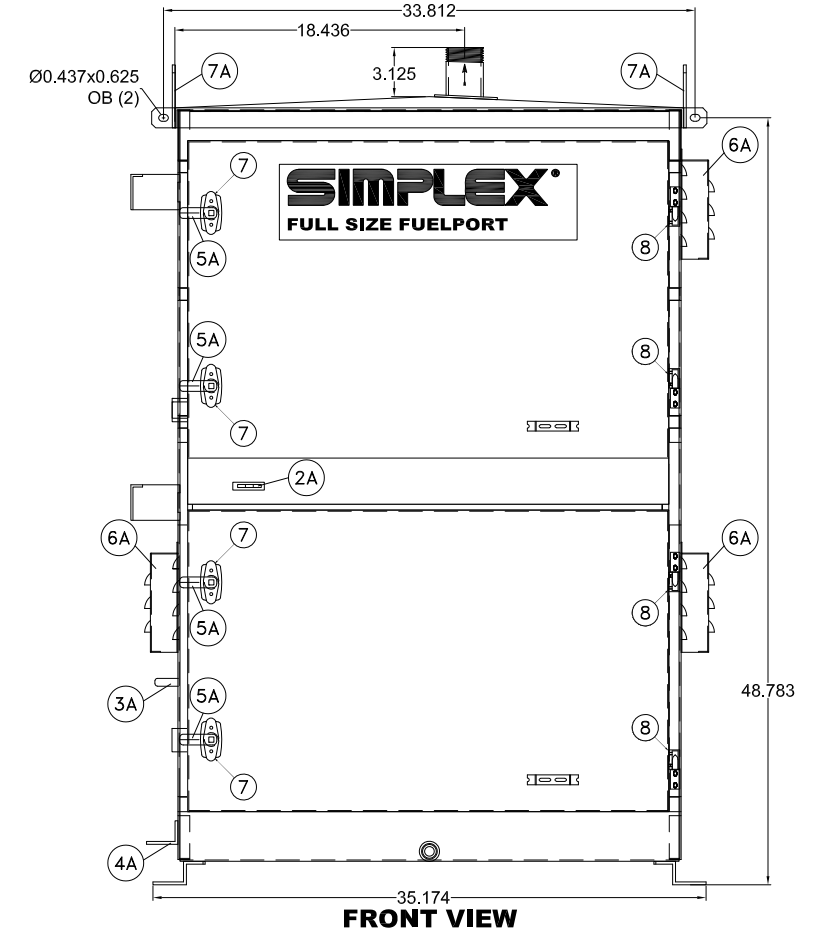
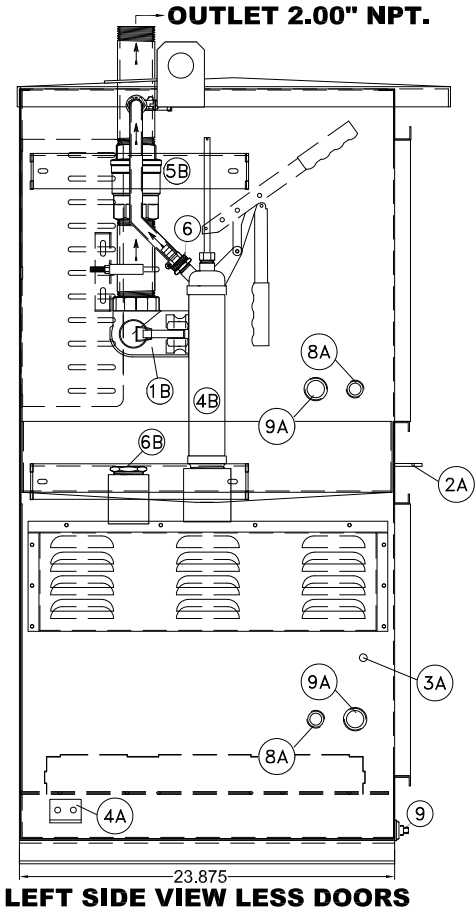
\*\*CUSTOMER DRAWING\*\*

<input checked="" type="checkbox"/>	STD. FILLING SYSTEM DRAWING
<input type="checkbox"/>	NON-STD. FILLING SYSTEM DRAWING

- NOTES
- 1) ALL DIMENSIONS ±.125
  - 2) DUE TO SYSTEM COMPLEXITY SOME COMPONENTS MAY NOT BE VISIBLE IN ALL VIEWS
  - 3) CONSTRUCTION WELDED 14 GA. H.R.S.
  - 4) CABINET COLOR: **WHITE** DOORS COLOR: **BLUE**
  - 5) APPROXIMATE WEIGHT: 315lbs.



REFERENCE ASSEMBLY (FOR SIMPLEX USE ONLY)			
ITEM	DESCRIPTION	PART NUMBER	QTY.
1A	FULL SIZE FILL BASE WELDMENT ASSEMBLY	ACD-00056396D	1
FABRICATED PARTS (Weld-OPERATION 10)			
ITEM	DESCRIPTION	PART NUMBER	QTY.
2A	COMPACT FILL BASE PADLOCK SLOT/TAB, 7GA. H.R.S.		1
3A	COMPACT FILL BASE STAINLESS STEEL GROUND STUD		1
4A	FULL SIZE FILL BASE STAINLESS STEEL GROUND LUG		1
5A	COMPACT FILL BASE DOOR PAWL, 2.375", GALVANIZED		4
6A	FULL SIZE FILL BASE LOUVER COVER		3
7A	FULL SIZE FILL BASE LIFT EYE		2
8A	0.50" NPT. CONDUIT COUPLING, 150#, BLK.		2
9A	0.75" NPT. CONDUIT COUPLING, 150#, BLK.		2
FUEL ASSEMBLY PARTS (FLOOR STOCK)			
ITEM	DESCRIPTION	PART NUMBER	QTY.
1	BV1 0.50" NPT. MANUAL BALL VALVE, FULL PORT, BRASS/BRONZE BODY		2
2	CV 0.50" NPT. CHECK VALVE, SPRING TYPE, BRONZE W/ VITON O-RING		1
3	NP2 0.50"x1.50" NPT. NIPPLE, SCH. 40, 304 STAINLESS STEEL, TBE		2
4	NP3 0.75"x3.00" NPT. NIPPLE, SCH. 40, 304 STAINLESS STEEL, TBE		1
5	HB1 HOSE BARB 0.50" ID BARB x 0.50" NPT. MALE THREADS, BRASS		3
6	HB2 HOSE BARB 0.50" ID BARB x GHT FEMALE THREADS, BRASS		1
7	DLN DOOR LATCH, NON-LOCKING T-HANDLE, BLACK W/ GASKET		4
8	DH DOOR HINGE 2-1/4"x19/32" #10 W/ UL GREEN SEALING WASHERS		4
9	SP SUMP PLUG, 0.375" NPT. HEX HEAD, 316 STAINLESS STEEL		1
10	PC PIPE CLAMP U-BOLT, STEEL FOR 2.00" PIPE, 3/8"-16 THREAD		1
11	HC HOSE CLAMP W/ STAINLESS STEEL BAND		4
12	H PCV CLEAR BRAIDED HOSE, 0.50" I.D. x 0.75" O.D.		-
13	T1 0.50" NPT. TEE, 150#, 304 STAINLESS STEEL		1
14	RB1 0.75"x0.50" NPT. REDUCER BELL, 150#, 304 STAINLESS STEEL		1



FUEL ASSEMBLY PARTS (FS Assy-OPERATION 10)			
ITEM	DESCRIPTION	PART NUMBER	QTY.
1B	AC 2.00" ANGLE CHECK ELBOW COUPLER, FEMALE NPT. THREAD x COUPLER, ALUMINUM BODY W/ VITON SEAL, PART G		1
2B	DP1 DUST PLUG ADAPTER FOR 2.00" COUPLER, ALUMINUM, PART W		1
3B	N1 2.00"x6.00" NPT. NIPPLE, SCH. 40, 304 STAINLESS STEEL, TBE		1
4B	MHP MANUAL HAND PUMP, STEEL BODY W/ ALUMINUM HEAD & BASE 1-GAL. PER 9 STROKES DELIVERY RATE		1
5B	BV2 2.00" NPT. MANUAL BALL VALVE, FULL PORT, BRASS/BRONZE BODY		1
6B	P1 1.50" NPT. PLUG, HEX HEAD, 150#, 304 STAINLESS STEEL		1
7B	E1 0.50" NPT. STREET ELBOW, 90 DEGREE, 150#, 304 STAINLESS STEEL		1

AVAILABLE PARTS (REFERENCE SALES ORDER FOR OPTIONS)			
FUEL ASSEMBLY PARTS (FLOOR STOCK)			
ITEM	DESCRIPTION	PART NUMBER	QTY.
15	RC 3.00"x2.00" REDUCING COUPLER x ADAPTER, 3.00" PART D COUPLER x 2.00" ADAPTER, ALUMINUM BODY W/ VITON GASKET	60000190	1
	DP DUST PLUG ADAPTER FOR 3.00" COUPLER, ALUMINUM, PART W	22440904	1
16	DL DIESEL LABEL, 6"x3"H, GREEN/WHITE	24138005	1
17	GL GAS LABEL, 6"x3"H, RED/WHITE	24138000	1
18	EQ FLORIDA EQ-481 SPILL CONTAINMENT LABEL, 5.25"Lx2.5"H, WHITE/BLACK	24055213	1

- DIESEL 16
- GAS 17
- Florida Eq-481 18

**SIMPLEX**  
 SIMPLEX, INC.  
 5300 RISING MOON ROAD  
 SPRINGFIELD, ILLINOIS 62711-6228

THE INFORMATION HEREON IS THE PROPERTY OF SIMPLEX, INC., AND/OR ITS SUBSIDIARIES. WITHOUT WRITTEN PERMISSION ANY COPYING, TRANSMITTAL TO OTHERS AND USE EXCEPT THAT FOR WHICH IT IS LOANED IS PROHIBITED.  
 © 2019 SIMPLEX, INC.  
 ALL RIGHTS RESERVED

THIRD ANGLE PROJECTION

REV	DATE	DESCRIPTION	INT	APPR
A	12/30/2019	ORIGINAL DESIGN		

TOLERANCES  
 X.XXX ± 0.005"  
 X.XX ± 0.010"  
 X.X ± 0.020"  
 FRACTIONAL ± 1/32"  
 ANGLES ± 1°  
 SURFACES 125

APPROVED BY: AA  
 DRAWN BY: AA  
 SCALE: 1:12.0278  
 SHEET SIZE: ANSI B  
 JOB NUMBER: NA

DESCRIPTION  
 FULL SIZE FUEL PORT  
 FFP-2 PICTORIAL  
 (PN. 50002629)

Approved 12/30/2019

DRAWING NUMBER  
**ACD-00066004**

SHEET NUMBER: 1/1  
 REVISION: A