

DC PowerCab™ 120

Factory-packaged Non-stop DC Power System



Complete non-stop DC power system – includes charger, battery, DC distribution
Ships fully assembled – cuts on-site labor time, cost and risk
Single source convenience – means simple ordering and no-excuses after-sale service
Space-saving cabinet – simplifies planning, consumes less floor space
Fully enclosed system – offers a safer working environment
24, 48, 120, 240 volt systems – suit nearly any application



Inside PowerCab™

DC load center

2-pole, 14 KAIC battery breaker
Up to 12 ea. 2-pole, 14 KAIC load breakers
19 additional load breakers optional
Secure bolt-on (not snap-on) design
UL listed panelboard and breakers



EnerGenius IQ charger

Innova award-winner for "best technology"
Consulting Specifying Engineer Product of the Year
Dual microprocessor fault tolerance
Automatic battery check system
System data logger
Field-selectable input voltage
C-UL listed, CE Marked (50/60 Hz units)

Optional accessories

Low volt disconnect
Inverter
Charger options
Stainless steel cabinet
NEMA 3R (not C-UL Listed, different dimensions)

IBC Seismic rated cabinet

Ships fully assembled and tested
Top or bottom cable entry
CRS or optional stainless steel
ANSI-61 gray or black finish
Optional expansion cabinet for more battery and charger capacity
Optional top-lift feature

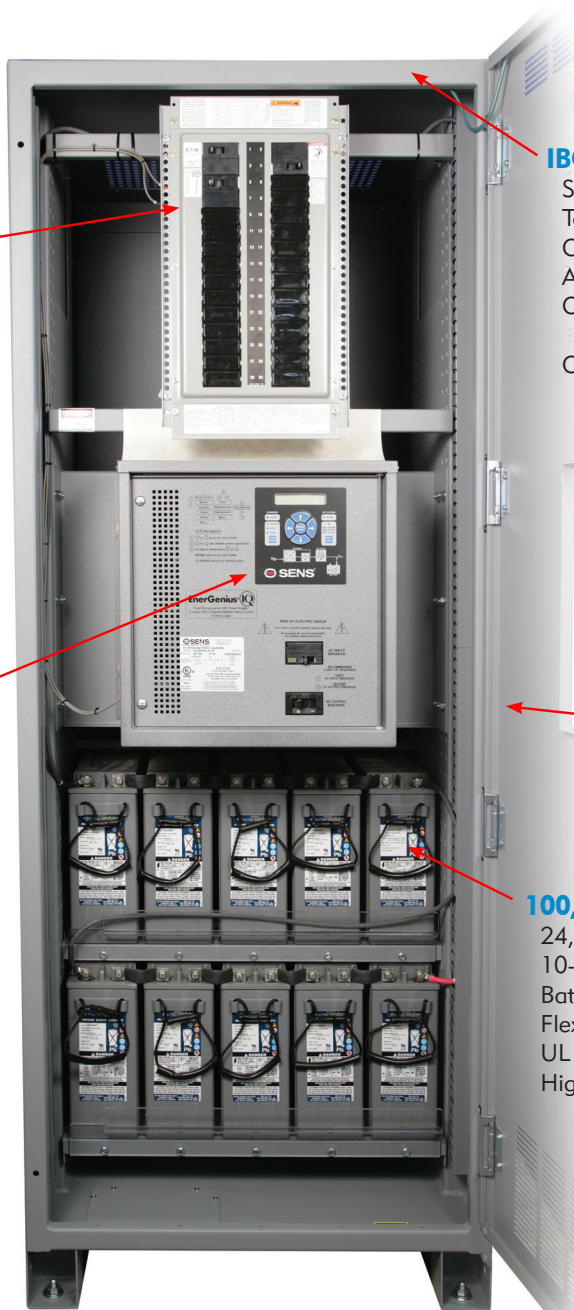
5-Year
Charger Warranty
2-Year System Warranty

UL Listed System

Most standard configurations are UL Listed; consult factory for specifics

100, 150, 170 or 200 AH premium battery

24, 48, 120, 240-volt DC systems
10-year VRLA design
Battery secured and pre-wired
Flexible battery jumpers
UL recognized
Higher AH available with multiple strings

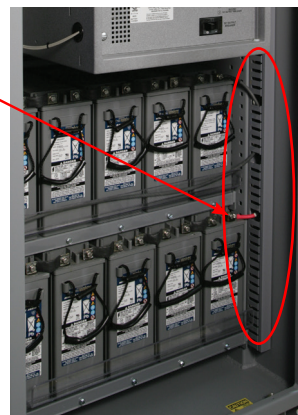


Simple and easy field wiring

Generous open space around DC load center
Top or bottom cable entry
Wire channels organize and segregate wiring

Easily accessible load breakers

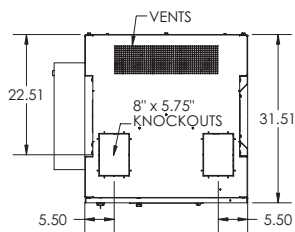
Hinged load center door
Hand operated or key lock access



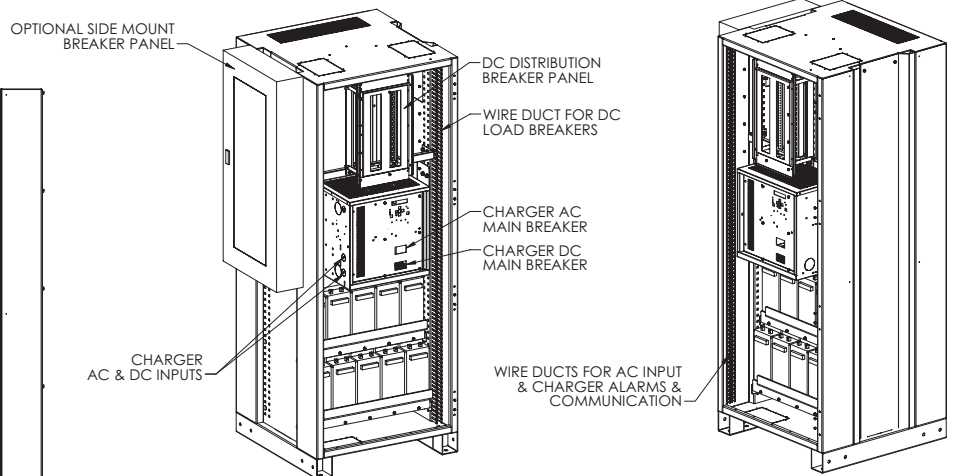
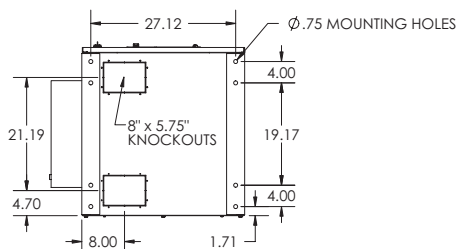
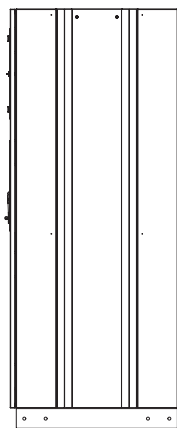
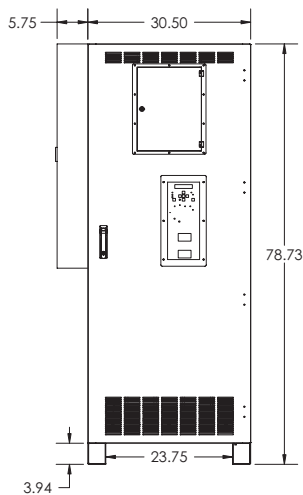
Cuts Risk, Saves Time and Money

SENS PowerCab 120 is factory engineered and arrives fully assembled, ready to install and use. Fast, predictable installation allows your technicians to focus on higher value activities. Start saving valuable engineer and installer time by specifying SENS' PowerCab™ non-stop DC Power System.

Risks & costs	SENS PowerCab™	Conventional system
Suppliers	Single source solution	Multiple suppliers need coordination
Engineering	Factory engineered, assembled & tested	Surprises and costly job site delays
Battery rack	No battery rack or assembly needed.	Some assembly needed!
Battery	No handling of batteries needed	Heavy & dangerous battery installation work
Space	Efficiently uses vertical space	Excessive, unpredictable space need
User safety	Live terminals enclosed in cabinet	Dangerous battery terminals
Ease of use	Single point of contact, standardized system	Multiple suppliers, poor system documentation



Dimensions and Weights



Typical weights:

1,375 lbs for 120V system, 100 AH battery & 12A charger
 1,825 lbs for 120V system, 150 AH battery & 25A charger
 1,875 lbs for 120V system, 170 AH battery & 25A charger

PowerCab Model Number

Cabinet type	Cabinet qty	Cabinet material	DC voltage	Batt. strings	Batt amp-hour code	Charger current	AC input	Charger package	System alarms	DC dist'n	Low volt. disc.	Inverter code	Factory option
4	A	G	8	1	15	C	T	B	B	C	1	C	
(A)	(B)	(C)	(D)	(E)	(F)	(G)	(H)	(I)	(J)	(K)	(L)	(M)	

	Parameter	Code	Value
(A)	Cabinet	4 5	PowerCab™ 120 cabinet PowerCab™ with top-lift feature
(B)	# of cabinets & access	A B C D	One cabinet, key locking main & breaker access doors One cabinet, no locks on main & breaker access doors Two cabinets ¹ , key locking main & breaker access doors Two cabinets ¹ , no locks on main & breaker access doors
(C)	Cabinet material/finish	G B	Steel, ANSI 61 gray powder coat finish Steel, black powder coat finish
(D)	DC output voltage code	2 4 8 9	24-volt nominal (12 cells lead-acid) 48-volt nominal (24 cells lead-acid) 120-volt nominal (60 cells lead-acid) 240-volt nominal (120 cells lead-acid) ¹
(E)	Battery strings	1 – 4	1 to 4 strings
(F)	Battery AH code	10 15 17 20	100 AH 150 AH 170 AH 200 AH
(G)	EnerGenius IQ charger output current	6 B N C D E F G H	6 amp (24, 48, 120 & 240V systems) 12 amp (24, 48, 120 & 240V systems) 16 amp (24, 48, 120 & 240V ⁷ systems) 25 amp (24, 48, 120 & 240V ⁷ systems) 35 amp (24, 48 & 120V ⁷ systems) 50 amp (24, 48 & 120V ⁷ systems) 75 amp (24 & 48V systems) ⁷ 100 amp (24 & 48V systems) ⁷ 150 amp (24V systems) ⁷
(H)	AC input code	8 P T Z 4 V	480 VAC, 60 Hz, 1Ø 115-120 / 208 / 230-240 VAC, 50/60 Hz, 1Ø 115-120 / 208 / 230-240 VAC, 60 Hz, 1Ø 208/230-240 VAC, 60 Hz, 1Ø ⁸ 230 VAC, 50/60 Hz, 1Ø ⁸ 400 VAC, 50/60 Hz, 1Ø
(I)	Charger package code	A D B C E	IQ Filtered Package (option 511) IQ Eliminator Package (option 512) IQ Eliminator Plus Package (option 514) IQ Extreme Package (option 534) IQ Extreme Package w/ 65KAIC AC breaker (option 574) ⁸
(J)	Alarm / communications options ⁵	A C B L K M N	Summary Form C alarm Individual Form C alarms Extended individual Form C alarms Remote temp sense & load share kit Individual Form C alarms + RTS & load share Modbus data communications Modbus data comm + individual Form C alarms
(K)	DC load center	C E F	Panel, 100A, 2P battery main, 2P charger feed + 12 ea. 2P load breaker positions ² Option “C” plus bolt-on external 2P, 20-circuit breaker panel (31 circuits total) ³ Option “C” plus interconnected distribution panel in second battery cabinet
(L)	Low volt disconnect	0 1 2	No low DC voltage disconnect Low DC voltage disconnect ⁴ Redundant low DC voltage disconnect
(M)	Inverter code	0 A B C D E F	No inverter 600 watt inverter, 120 VAC, 60 Hz output ⁶ 600 watt inverter, 230 VAC, 50 Hz output ⁶ 1100 watt inverter, 120 VAC, 60 Hz output ⁶ 1100 watt inverter, 230 VAC, 50 Hz output ⁶ 2000 watt inverter, 120 VAC, 60 Hz output ⁶ 2000 watt inverter, 230 VAC, 50 Hz output ⁶

How to Order PowerCab

1. Build the model number of the PowerCab that best fits your application.

[illegible]

2. Specify DC distribution breakers

Breaker ratings of 15, 20, 25, 30, 35, 40, 45, 50, 60, 70, 80, 90 and 100 amps are available.

Up to 12 distribution breaker locations are available with standard load center.

Up to 31 distribution breaker locations
are available with expanded load center.

3. Provide the model number and circuit breaker configuration to your sales rep or SENS directly.

2. Two cabinets required for 240 VDC system, or 120V battery > 200 AH.
3. 11 load breaker positions are allowed in two-cabinet configuration unless load center option "E" is specified
4. Mounted on left side of system cabinet, requiring left side access
5. Opens battery-to-load circuit at 1.75 v.p.c. to prevent over-discharge of battery, and closes again after return of charger output. Operation is automatic
6. See EnerGenius IQ datasheet for details
7. Consumes 1 distribution breaker position
8. Call Factory for details (non-standard)
9. Available for >3.4 KW output power models only



111046 D

Contact information

**For information and service on any SENS product,
please contact us at:**
1.866.736.7872 • 303.678.7500 • Fax 303.678.7504
www.sens-usa.com • info@sens-usa.com
Stored Energy Systems, LLC
1840 Industrial Circle, Longmont, CO 80501 USA

