

4

3

2

1

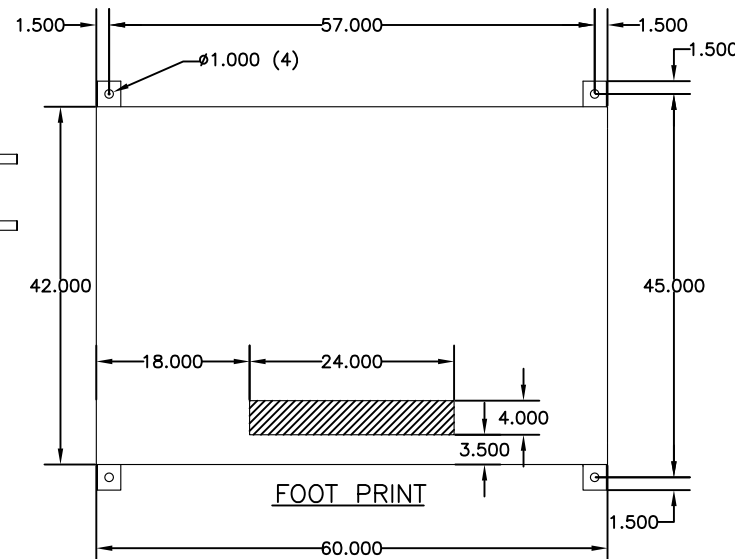
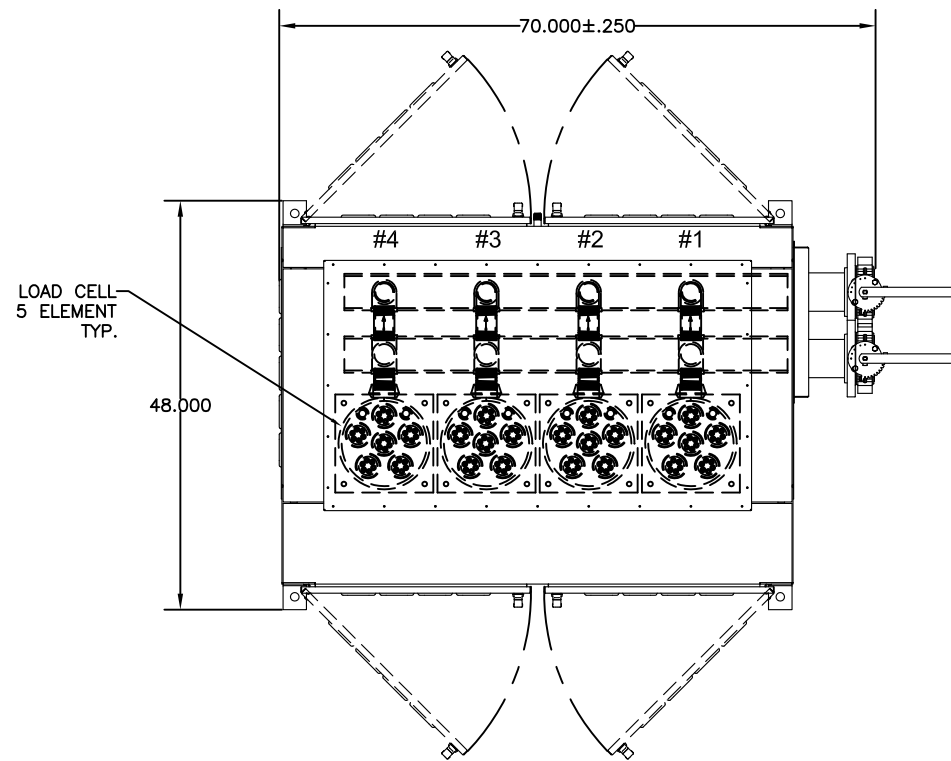
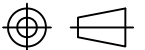
SIMPLEX

SIMPLEX, INC.
5300 RISING MOON ROAD
SPRINGFIELD, ILLINOIS 62711-6228

THE INFORMATION HEREON IS THE
PROPERTY OF SIMPLEX, INC. AND/OR
ITS SUBSIDIARIES. WITHOUT WRITTEN
PERMISSION ANY COPYING,
TRANSMITTAL TO OTHERS AND USE
EXCEPT THAT FOR WHICH IT IS
LOANED IS PROHIBITED.

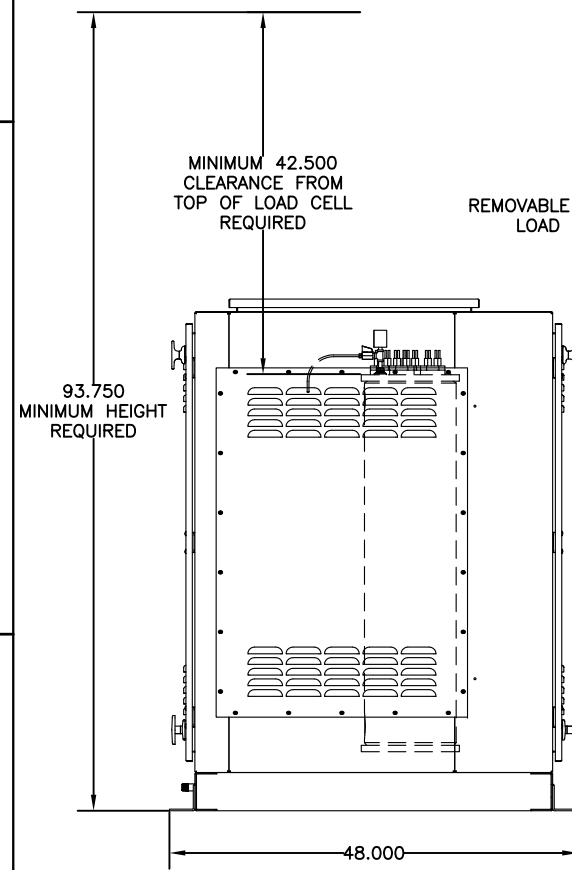
© 2018 SIMPLEX, INC.
ALL RIGHTS RESERVED

THIRD ANGLE PROJECTION

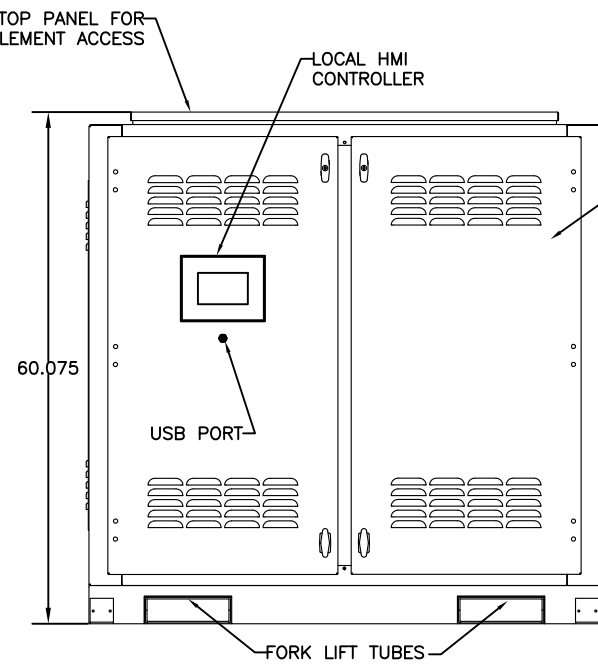


NOTES:

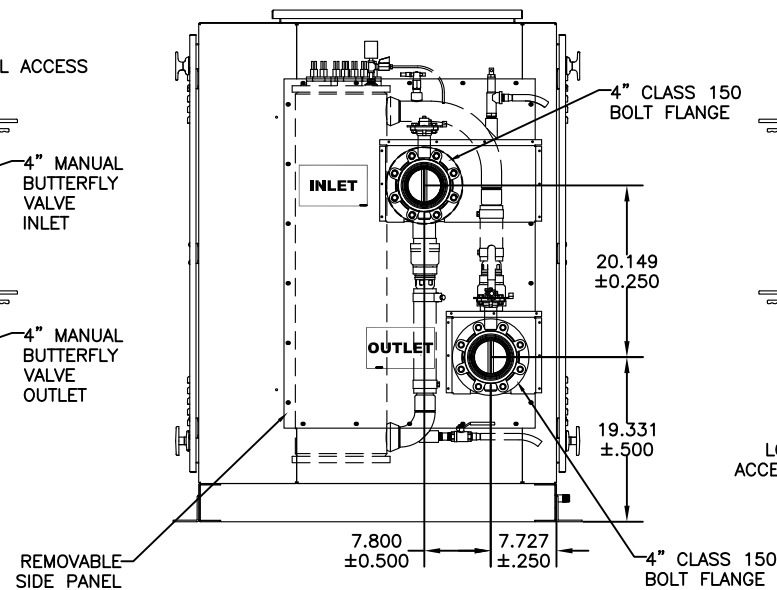
- CONSTRUCTION: TYPE 1
A. ENCLOSURE: ALL WELDED FORMED STEEL FRAME, DOORS, COVER PANELS, AND BASE.
B. COOLING VESSEL: 10 IN NOMINAL STEEL PIPE, SCH-40, GRADE B, 0.365 IN THICK WALL,
C. PLUMBING: 4" - SCHEDULE 40 BLACK PIPE, W/ CLASS 150 BOLT FLANGES.
- SUPERFICIAL TREATMENT AND COLOR: ABRASIVE CLEANING
POWDER COAT - ASA 49 GREY
- PRESSURE RATING - 70 PSI WORKING PRESSURE
95 PSI TEST PRESSURE
- FLOW REQUIREMENT - 300 GPM @ 600KW
- THEORETICAL TEMPERATURE RISE -
 $\Delta T = KW / (GPM \times 0.16) = 12.5 \text{ F} @ 300 \text{ GPM}$
- MINIMUM FLOW REQUIREMENT - 25 GPM PER CELL
- THEORETICAL TEMPERATURE RISE AT MINIMUM FLOW - 25 GPM PER CELL
 $\Delta T = KW / (GPM \times 0.16) = 37.5 \text{ F} @ 25 \text{ GPM (150KW)}$
- MAX OUTLET TEMP. - 170°F
- MAX INLET TEMP. - 132.5°F
- DOOR SWING - 27.000"



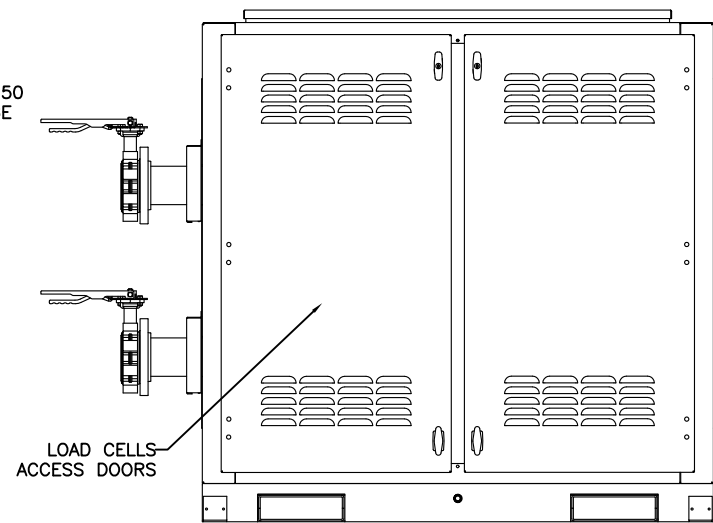
LEFT VIEW



FRONT VIEW



RIGHT VIEW



REAR VIEW

REV	DATE	DESCRIPTION	INT	APPR
A				
12/18/2018				
REVISIONS & UPDATES				
SUBMIT FOR APPROVAL				
JZ				
JZ				

TOLERANCES
 X.XXX ± 0.005"
 X.XX ± 0.010"
 X.X ± 0.020"
 FRACTIONAL ± 1/32"
 ANGLES ± 1°
 SURFACES 125

APPROVED BY: JZ

DRAWN BY: JZ

SCALE: 1:22.1957

SHEET SIZE: ANSI B

JOB NUMBER
100397-1-1

DESCRIPTION
LBW-600-416
PICTORIAL

Approved 12/18/2018

DRAWING NUMBER

ACD-00050955

SHEET NUMBER REVISION

1/1

A

4

3

2

1