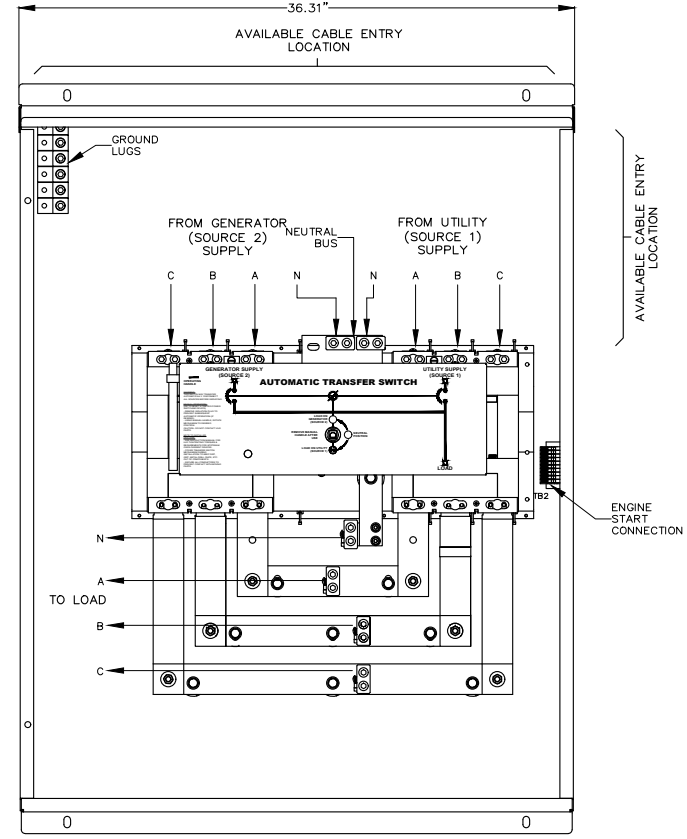
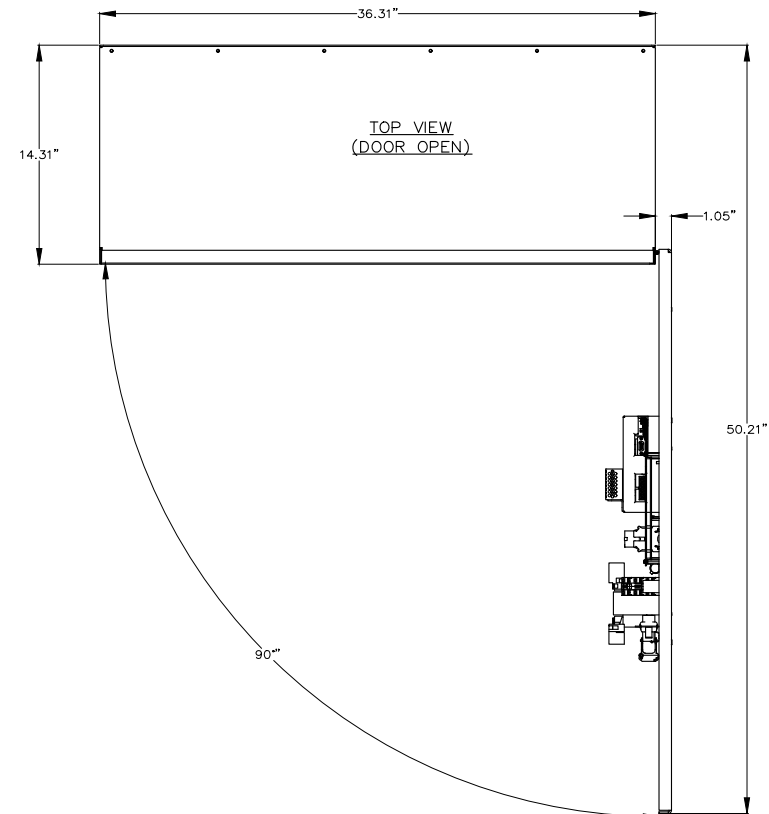


FRONT VIEW

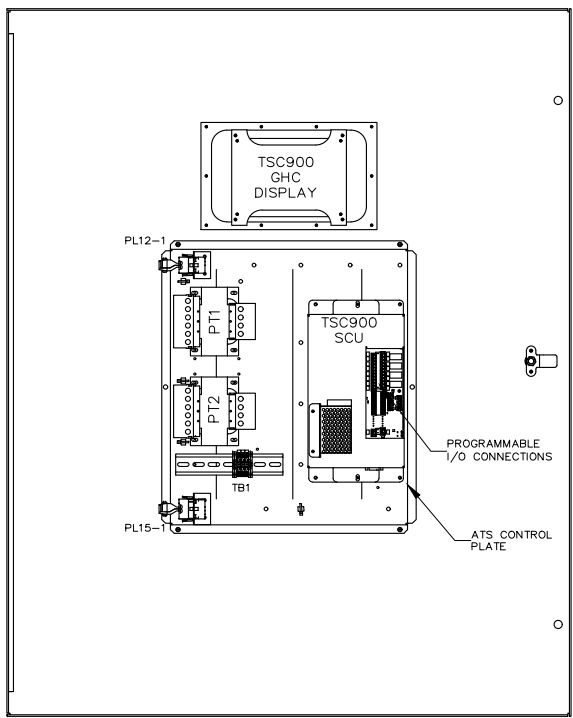
LHS VIEW (SIDE COVER REMOVED)



INTERIOR FRONT VIEW (DOOR NOT SHOWN)



TOP VIEW (DOOR OPEN)



VIEWED FROM REAR (INSIDE) OF DOOR

BASIC MODEL TS87xA	STANDARD ATS				
	MAX. VOLTAGE	RATED CURRENT (A)	240V	480V	600V
TS 87xA-600	600	600	65,000	50,000	35,000

CONNECTION DATA	
UTILITY (SRC1)	1-2C, 2/0-500MCM Cu/Al PER PHASE
GENERATOR (SRC2)	1-2C, 2/0-500MCM Cu/Al PER PHASE
LOAD	1-2C, 2/0-500MCM Cu/Al PER PHASE
NEUTRAL	1-2C, 2/0-500MCM Cu/Al PER SOURCE
GROUND	6C, #6-250MCM Cu/Al

- GENERAL NOTES**
- POWER SWITCHING DEVICES ARE MECHANICALLY INTERLOCKED SO THAT ONLY ONE DEVICE IS CLOSED AT A TIME
 - ENCLOSURE FINISH : ASA #61 GREY
 - REFER PROJECT SPECIFIC OPTIONS LIST FOR SELECTED ENCLOSURE TYPE

2.5" x 5"

⚠ DANGER PELIGRO

Arc Flash and Shock Hazard
Will cause severe injury or death. More than one line circuit-breaker diagram. Disconnect all sources of supply before servicing. This equipment must be installed and serviced only by qualified electrical personnel utilizing safe work practices and appropriate Personal Protective Equipment (PPE). Failure to comply may result in injury or death. Refer to NFPA 70E for minimum PPE requirements.

Risque d'Arc Electrique et d'Electrocution
Peut causer des blessures graves ou la mort. Plus d'un circuit sous tension - voir schéma. Couper toutes les sources d'alimentation avant de faire l'entretien et les réparations. Ce matériel doit être installé et entretenu uniquement par un électricien qualifié. Ce dernier doit connaître les protocoles de travail sécuritaires et porter l'équipement de protection individuelle approprié. Le non respect peut entraîner des blessures ou la mort. Reportez-vous à NFPA 70E pour le manuel des exigences minimales PPE.

Riesgo de Arco y Choque Eléctrico
Se causarán lesiones graves o muerte. Más de un circuito energizado - ver diagrama. Desconectar todas las fuentes de suministro antes de hacer mantenimiento. Este equipo solo se debe instalar y mantener por personal calificado, usando medidas de seguridad y equipo de protección personal adecuado. No seguir estas recomendaciones puede causar lesiones o muerte! Consultar la NFPA 70E para los requisitos mínimos del equipo de protección personal (PPE).

QTY = 1

APPROVED FOR CONSTRUCTION
 MASTER COPY REFERENCE COPY OF _____
 MULTIPLE UNIT WORK ORDER
 RELEASED FOR INFORMATION
 AUTH. BY: _____ DATE: _____

CROSS REFERENCE LEGEND	
SOC-C-1	GRID COORDINATE
SHEET No.	DRAWING No.
REFERENCE DRAWINGS	No.
REVISIONS	BY/AUTH DATE



AUTOMATIC TRANSFER SWITCH
 MODEL TS 870
 PHYSICAL LAYOUT & INSTALLATION DETAILS
 600A, 2P/3P, NEMA 1/2/12/3R, SINGLE DOOR, STD

DRAWINGS AND/OR OTHER TECHNICAL INFORMATION SUPPLIED BY THOMSON POWER SYSTEMS AS A PART OF A SALE OF EQUIPMENT ARE FOR THE PURCHASER'S USE SOLELY IN CONJUNCTION WITH THAT EQUIPMENT, UNLESS SPECIFICALLY AGREED TO OTHERWISE AS A PART OF THE TERMS OF SALE.

CUSTOMER THOMSON POWER SYSTEMS	
CUSTOMER ORDER No. C-XXXXXX	WORK ORDER No. W-XXXXXX
DRAWN BY AP	AUTH BY OG
DATE 16-01-26	REV 0
DRAWING/FILE No. MCS870M136	SHEET 10A