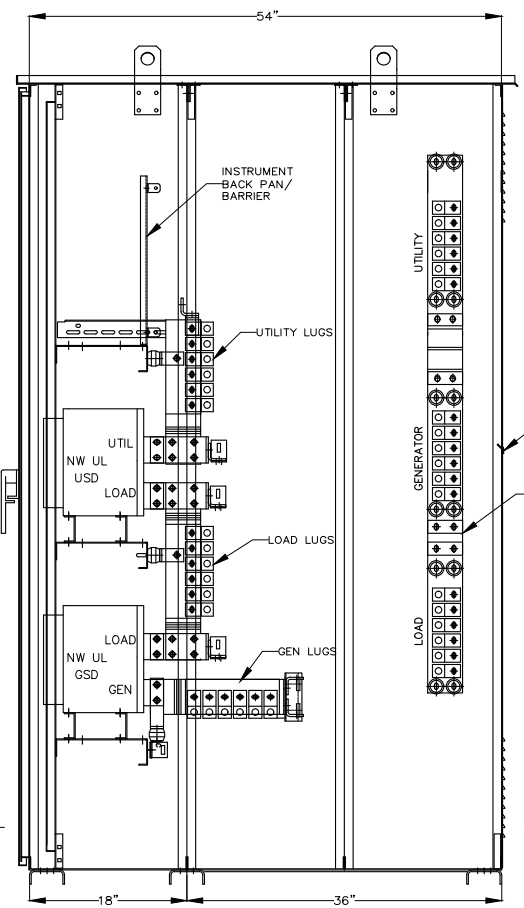
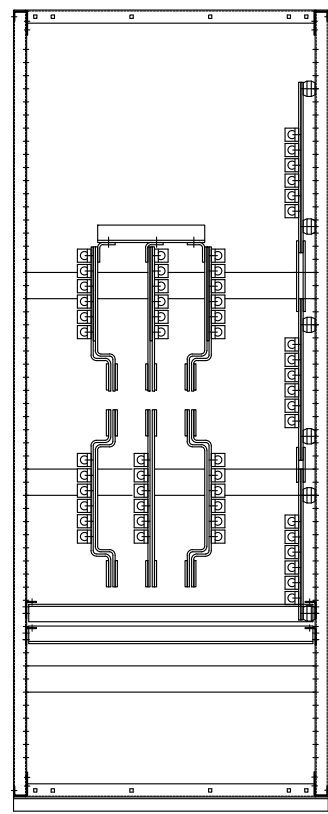


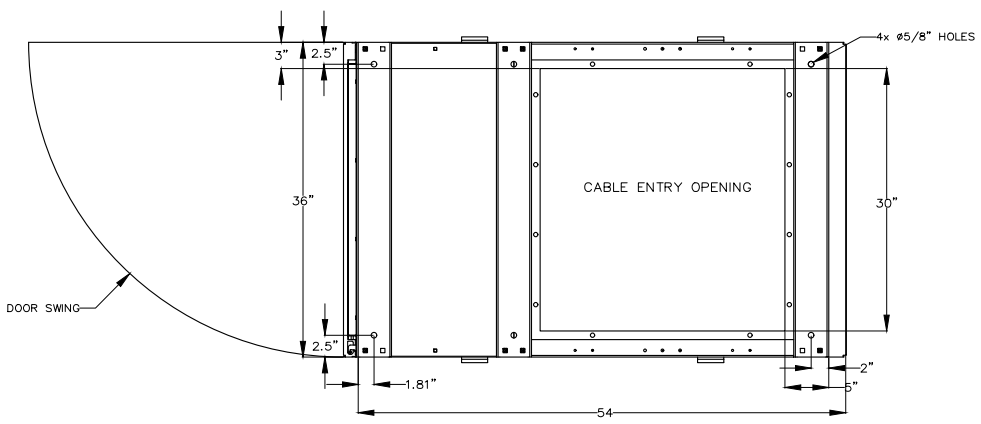
FRONT VIEW
(OUTER DOOR REMOVED)



RIGHT SIDE VIEW
SECTION A-A



BACK VIEW



BASE PLAN
SECTION B-B

BASIC MODEL TS 88xA	STANDARD ATS				
	WITHSTAND CURRENT RATING AVAILABLE AMPS (RMS)				
	MAX. VOLTAGE	RATED CURRENT (A)	Ø240V	Ø480V	Ø600V
TS 88xA-800	600	800	100,000	100,000	85,000
TS 88xA-1200	600	1200	100,000	100,000	85,000
TS 88xA-1600	600	1600	100,000	100,000	85,000
TS 88xA-2000	600	2000	100,000	100,000	85,000

CONNECTION DATA		
800A ATS	UTILITY (SRC1)	3C, 2/0-600MCM Cu/Al PER PHASE & NEUTRAL
	GENERATOR (SRC2)	3C, 2/0-600MCM Cu/Al PER PHASE & NEUTRAL
	LOAD	3C, 2/0-600MCM Cu/Al PER PHASE & NEUTRAL
	GROUND	#6-250MCM Cu/Al
1200A ATS	UTILITY (SRC1)	4C, 2/0-600MCM Cu/Al PER PHASE & NEUTRAL
	GENERATOR (SRC2)	4C, 2/0-600MCM Cu/Al PER PHASE & NEUTRAL
	LOAD	4C, 2/0-600MCM Cu/Al PER PHASE & NEUTRAL
	GROUND	#6-250MCM Cu/Al
1600A ATS	UTILITY (SRC1)	5C, 2/0-600MCM Cu/Al PER PHASE & NEUTRAL
	GENERATOR (SRC2)	5C, 2/0-600MCM Cu/Al PER PHASE & NEUTRAL
	LOAD	5C, 2/0-600MCM Cu/Al PER PHASE & NEUTRAL
	GROUND	#6-250MCM Cu/Al
2000A ATS	UTILITY (SRC1)	6C, 2/0-600MCM Cu/Al PER PHASE & NEUTRAL
	GENERATOR (SRC2)	6C, 2/0-600MCM Cu/Al PER PHASE & NEUTRAL
	LOAD	6C, 2/0-600MCM Cu/Al PER PHASE & NEUTRAL
	GROUND	#6-250MCM Cu/Al

- GENERAL NOTES**
- SWITCHBOARD SUPPLIED IN ONE PIECE
 - FRONT AND REAR ACCESS REQUIRED
 - EXTERIOR PAINT ASA #61 GREY
 - MAIN BUS 100% RATED, BRACED AT 100KA
 - ALL BUS WILL BE TIN-PLATED COPPER
 - UTILITY SWITCHING DEVICE (USD) IS SQUARE D, NW, 3P, ELECTRICALLY OPERATED, FIXED TYPE
 - GENERATOR SWITCHING DEVICE (GSD) IS SQUARE D, NW, 3P, ELECTRICALLY OPERATED, FIXED TYPE
 - AUTO TRANSFER SWITCH WIRING SHALL BE #18-14 TEW
 - NAME PLATES TO BE BLACK WITH WHITE LETTERS
 - REFER PROJECT SPECIFIC OPTIONS LIST FOR SELECTED ENCLOSURE TYPE

2" x 6" (TYPICAL)

AUTOMATIC TRANSFER SWITCH

UTILITY SWITCHING DEVICE USD
QTY = 1
1" x 3" (TYPICAL)

GENERATOR SWITCHING DEVICE GSD
QTY = 1

2.5" x 5"

⚠ DANGER PELIGRO

Arc Flash and Shock Hazard
Will cause severe injury or death. More than one live circuit - see diagram. Disconnect all sources of supply before servicing. This equipment must be installed and serviced only by qualified electrical personnel utilizing safe work practices and appropriate Personal Protective Equipment (PPE). Failure to comply may result in injury or death! Refer to NFPA 70E for minimum PPE requirements.

Risque d'Arc Electrique et d'Electrocution
Peut causer des blessures graves ou la mort. Plus d'un circuit sous tension - voir schéma. Couper toutes les sources d'alimentation avant de faire l'entretien et les réparations. Ce matériel doit être installé et entretenu uniquement par un électricien qualifié. Ce dernier doit connaître les pratiques de travail sécuritaires et porter l'équipement de protection individuelle approprié. Le non respect peut entraîner des blessures ou la mort! Reportez-vous à NFPA 70E pour le manuel des exigences minimales PPE.

Riesgo de Arco y Choque Eléctrico
Se causarán lesiones graves o muerte. Más de un circuito energizado - ver diagrama. Desconectar todas las fuentes de suministro antes de hacer mantenimiento. Este equipo solo se debe instalar y mantener por personal calificado, usando medidas de seguridad y equipo de protección personal adecuado. No seguir estas recomendaciones puede causar lesiones o muerte! Consultar la NFPA 70E para los requisitos mínimos del equipo de protección personal (PPE).

QTY = 1

APPROVED FOR CONSTRUCTION
 MASTER COPY REFERENCE COPY OF _____
 MULTIPLE UNIT WORK ORDER
 RELEASED FOR INFORMATION
 AUTH. BY: _____ DATE: _____

CROSS REFERENCE LEGEND		DRAWING No.		REVISIONS		BY/AUTH		DATE	
SOC-C-1	GRID COORDINATE								
	SHEET No.								



AUTOMATIC TRANSFER SWITCH
 MODEL TS 880
 PHYSICAL LAYOUT & INSTALLATION DETAILS
 800-2000A, 3P, NEMA 3R/3RX, FIXED MOUNT, STD

FOR REVIEW ONLY

DRAWINGS AND/OR OTHER TECHNICAL INFORMATION SUPPLIED BY THOMSON POWER SYSTEMS AS A PART OF A SALE OF EQUIPMENT ARE FOR THE PURCHASER'S USE SOLELY IN CONJUNCTION WITH THAT EQUIPMENT, UNLESS SPECIFICALLY AGREED TO OTHERWISE AS A PART OF THE TERMS OF SALE.			
CUSTOMER THOMSON POWER SYSTEMS		WORK ORDER No. W-XXXXXX	
CUSTOMER ORDER No. C-XXXXXX	AUTH BY AP	DATE 16-01-26	REV 0
DRAWING/FILE No. ICS880M101	SHEET 10A		