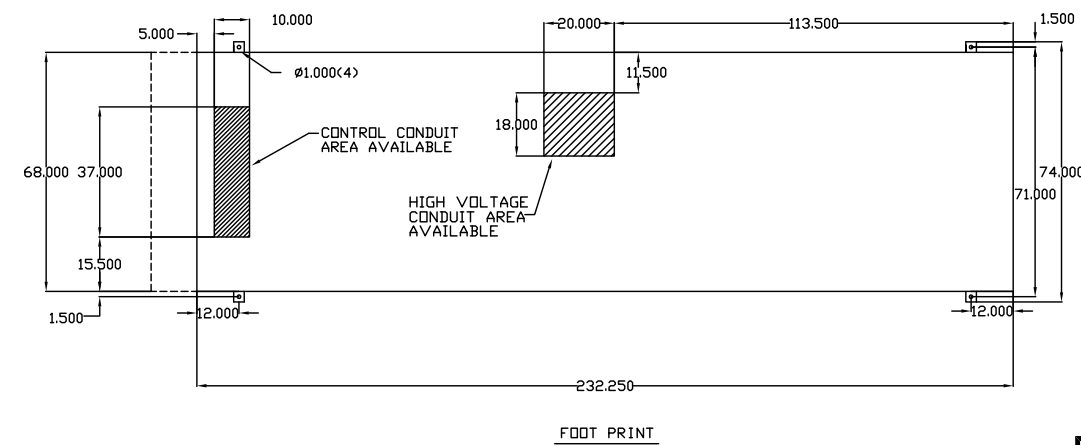
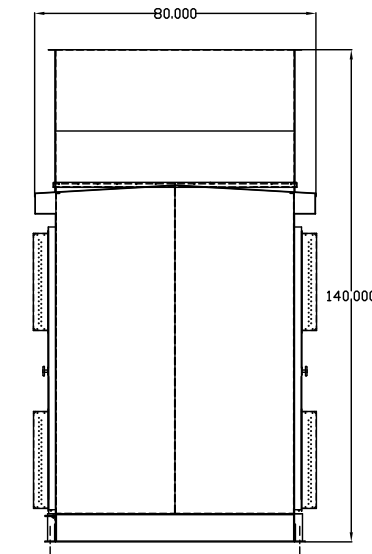
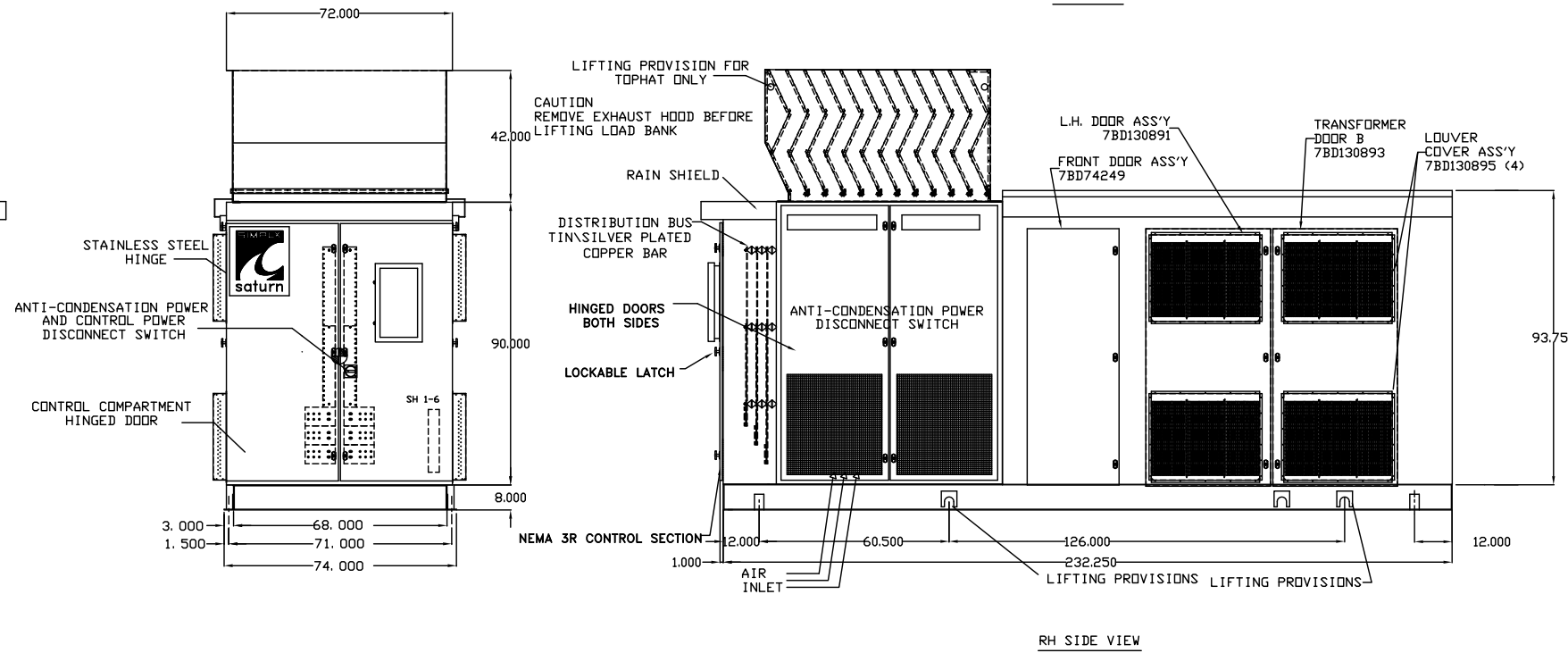
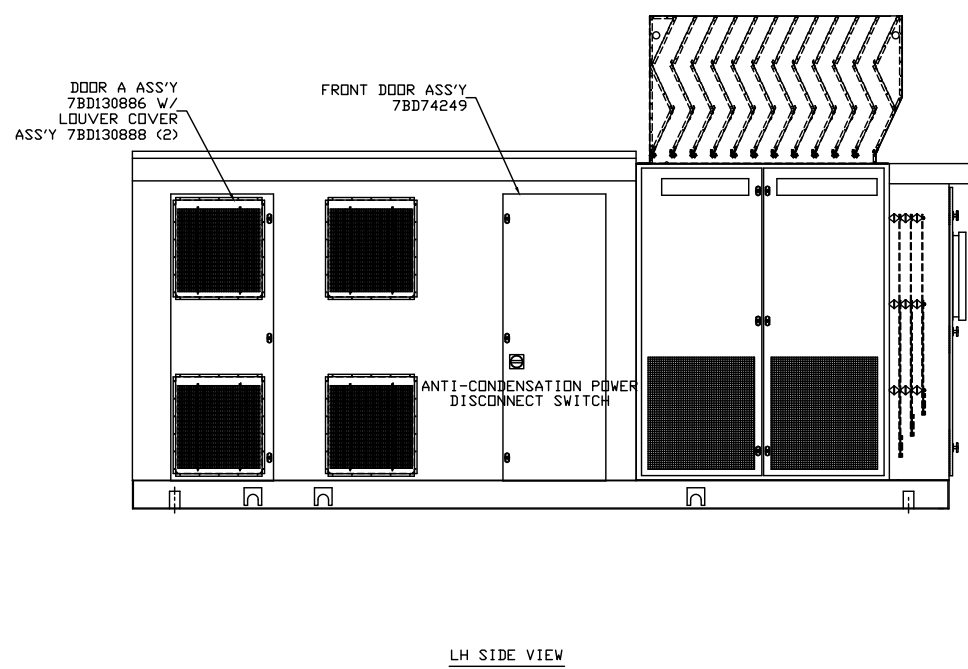
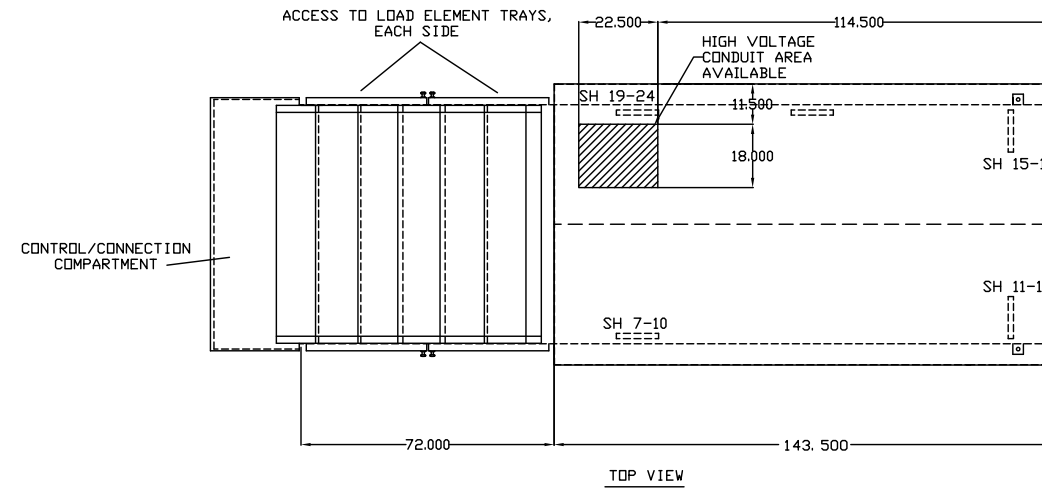


NOTES:

1. BOTTOM OF CONTROL COMPARTMENT AVAILABLE FOR CONDUIT ENTRY.
2. CONSTRUCTION: ALL WELDED FORMED STEEL FRAME, DOORS, PANELS AND SKID. SKID AND STRUCTURAL MEMBERS 7GA HRS, OUTER SHELL 12GA HRS AND HINGED DOORS 14GA HRS. ALL HINGES, EXTERIOR FASTENERS, AND EXTERIOR HARDWARE IS STAINLESS STEEL.
3. SURFACE PREPARATION: ABRASIVE CLEANED OR CHEMICALLY CLEANED AND PHOSPHATIZED
FINISH COLOR:
PRIMER: RECOATABLE EPOXY PRIMER (24702600), PART G, B67H5 (24702700), PART H, B67V5
PAINT: POLANE HS PLUS POLYURETHANE (24702800), F63JXA5108-1407 (24702801), V66V55 (24702802), V66VB11
BUFF PRIMER CATALYST
ASA 49 GRAY CATALYST ACCELERATOR
4. APPROXIMATE SHIPPING WEIGHT: 23,650 LBS. TOTAL UNIT
: 22,550 LBS. LOAD BANK
: 1100 LBS. TOPHAT
5. 20 HP MOTOR, 60" COOLING FAN



SIMPLEX			SPRINGFIELD, ILLINOIS
SCALE :	APPROVED BY :	DRAWN BY : RER	
DATE : 08-02-10		REVISED :	
SATURN-HV LOAD BANK PICTORIAL			
STANDARD			DRAWING NUMBER 211947

THE INFORMATION HEREON IS THE PROPERTY OF SIMPLEX, INC., AND/OR ITS SUBSIDIARIES. WITHOUT WRITTEN PERMISSION ANY COPYING, TRANSMITTAL TO OTHERS AND USE EXCEPT THAT FOR WHICH IT IS LOANED IS PROHIBITED. DESIGN SUBJECT TO CHANGE WITHOUT NOTICE.
©2010 SIMPLEX, INC. ALL RIGHTS RESERVED.