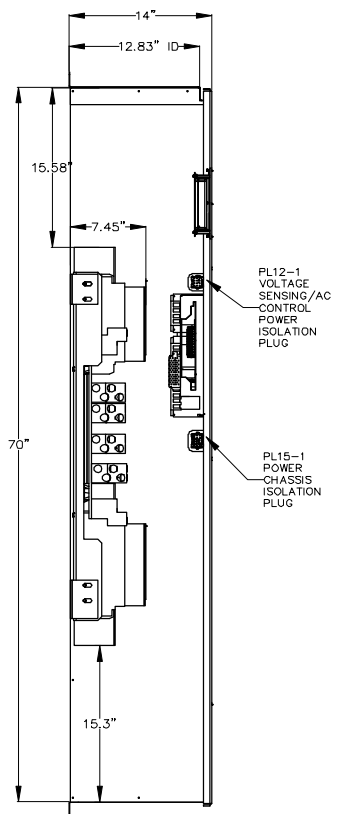
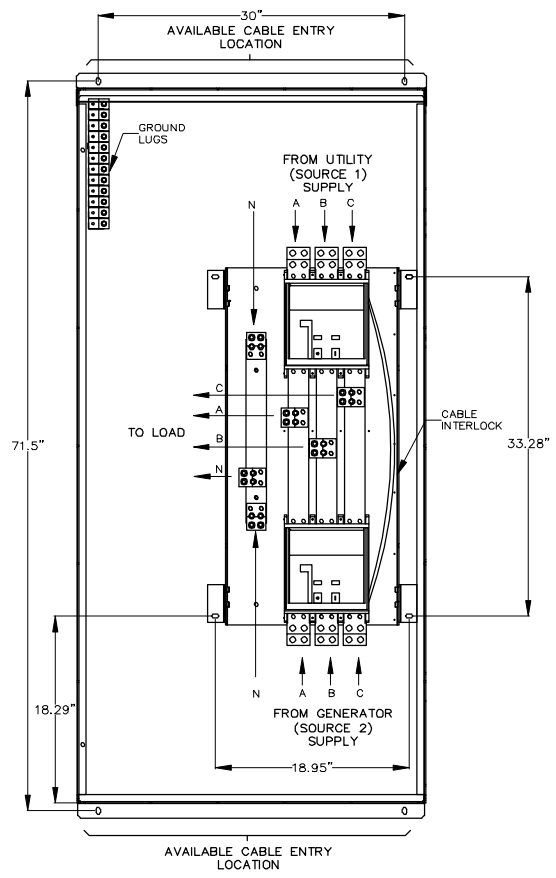


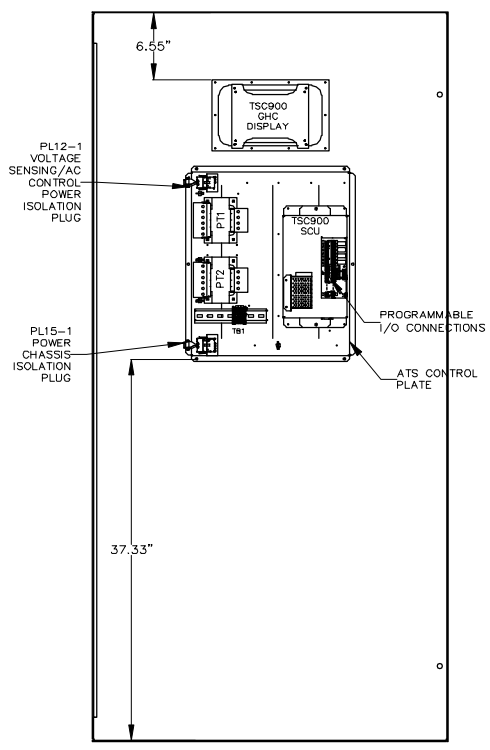
FRONT VIEW



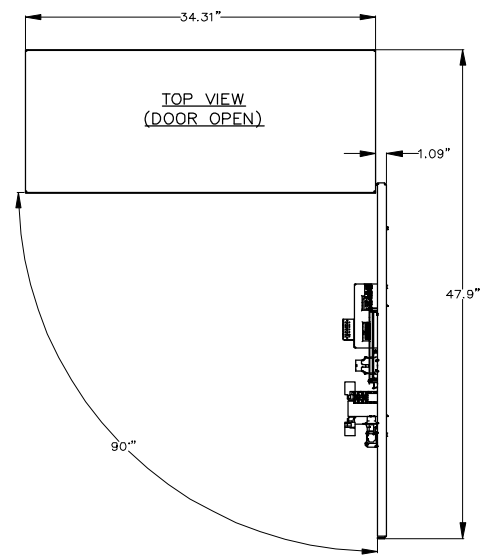
LHS VIEW  
(SIDE COVER REMOVED)



INTERIOR FRONT VIEW  
(DOOR NOT SHOWN)



VIEWED FROM REAR  
(INSIDE) OF DOOR



TOP VIEW  
(DOOR OPEN)

BASIC MODEL TS87xA	STANDARD ATS				
	CLOSING AND WITHSTAND RATING AVAILABLE AMPS (RMS)				
	MAX. VOLTAGE	RATED CURRENT (A)	Ø240V	Ø480V	Ø600V
TS 87xA-1000	600	1000	200,000	100,000	65,000
TS 87xA-1200	600	1200	200,000	100,000	65,000

	CONNECTION DATA	
	UTILITY (SRC1)	GENERATOR (SRC2)
1000A ATS	LOAD	1-4C, 4/0-500MCM Cu/Al PER PHASE
	NEUTRAL	1-4C, 4/0-500MCM Cu/Al PER SOURCE
	GROUND	12C, #6-250MCM Cu/Al
	UTILITY (SRC1)	1-4C, 4/0-500MCM Cu/Al PER PHASE
1200A ATS	LOAD	1-4C, 4/0-500MCM Cu/Al PER PHASE
	NEUTRAL	1-4C, 4/0-500MCM Cu/Al PER SOURCE
	GROUND	12C, #6-250MCM Cu/Al
	UTILITY (SRC1)	1-4C, 4/0-500MCM Cu/Al PER PHASE

- GENERAL NOTES**
- ENCLOSURE FINISH : ASA #61 GREY
  - REFER PROJECT SPECIFIC OPTIONS LIST FOR SELECTED ENCLOSURE TYPE
  - ADD GASKETING FOR NEMA 3R OPTION

2.5" x 5" **DANGER PELIGRO**

**Are Flash and Shock Hazard**  
 Wear eye and face protection. Do not touch live parts. Disconnect all sources of supply before servicing. This equipment must be installed and serviced only by qualified electrical personnel utilizing safe work practices and appropriate Personal Protective Equipment (PPE). Failure to comply may result in injury or death. Refer to NFPA 70E for minimum PPE requirements.

**Risque d'Arcs Électriques et d'Électrocution**  
 Portez des lunettes protectrices et un casque. Ne touchez pas les parties sous tension - voir schéma. Coupez toutes les sources d'alimentation avant de faire l'entretien et les réparations. Ce matériel doit être installé et entretenu uniquement par un électricien qualifié. Ce dernier doit connaître les pratiques de travail sécuritaires et porter l'équipement de protection individuelle approprié. Le non respect peut entraîner des blessures ou la mort. Reportez-vous à NFPA 70E pour le manuel des exigences relatives à PPE.

**Riesgo de Arco y Choques Eléctricos**  
 Use protección ocular y facial. No toque partes energizadas - ver diagrama. Desconecte todas las fuentes de alimentación antes de hacer mantenimiento. Este equipo solo se debe instalar y mantener por personal calificado, usando medidas de seguridad y equipo de protección personal adecuada. No respetar estas recomendaciones puede causar lesiones o mortalidad. Consulte la NFPA 70E para los requisitos mínimos del equipo de protección personal (PPE).

QTY = 1

APPROVED FOR CONSTRUCTION  
 MASTER COPY  REFERENCE COPY OF  
 MULTIPLE UNIT WORK ORDER  
 RELEASED FOR INFORMATION  
 AUTH. BY: \_\_\_\_\_ DATE: \_\_\_\_\_

CROSS REFERENCE LEGEND	
50C-C-1	GRID COORDINATE
	SHEET No.

NO.	REVISIONS	BY	AUTH	DATE
2	T7 BRKR CHASSIS AND NEUTRAL CHANGED	DJ	OG	17-01-13
1	WIRE HARNESS UPDATED AS PER ECR-0113988	SR	OG	16-07-22



AUTOMATIC TRANSFER SWITCH  
 MODEL TS 870  
 PHYSICAL LAYOUT & INSTALLATION DETAILS  
 1000-1200A, 2P/3P, NEMA 1/2/12/3R MOTOR OPERATED, STD

CUSTOMER THOMSON POWER SYSTEMS			
CUSTOMER ORDER No.	WORK ORDER No.		
C-XXXXXX	W-XXXXXX		
DRAWN BY	AUTH BY	DATE	REV
AP	OG	16-01-26	2
DRAWING/FILE No.	SHEET		
MOS870M102	10A		