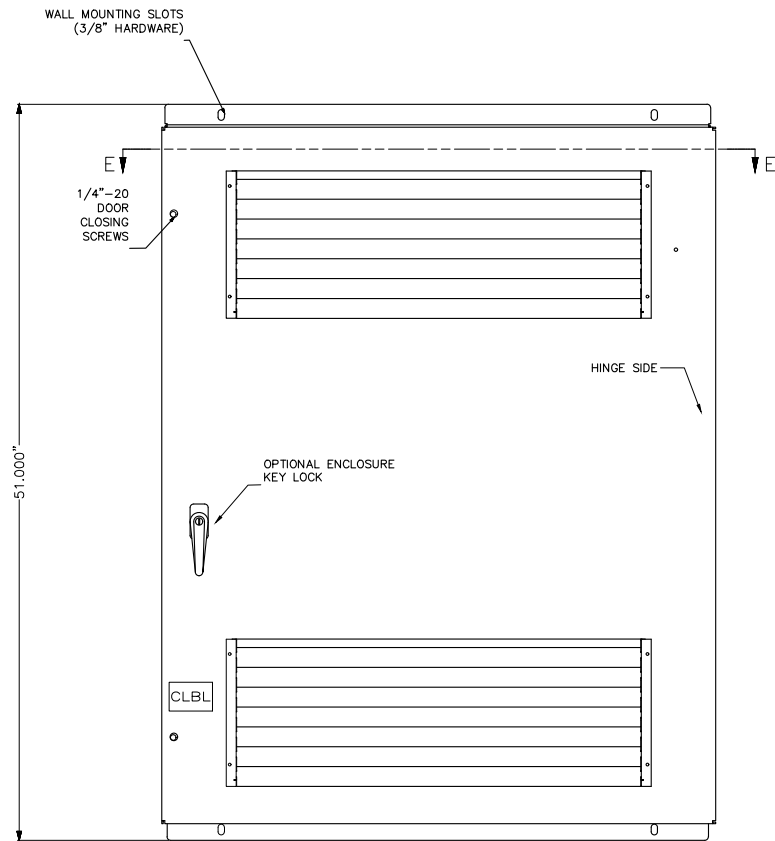
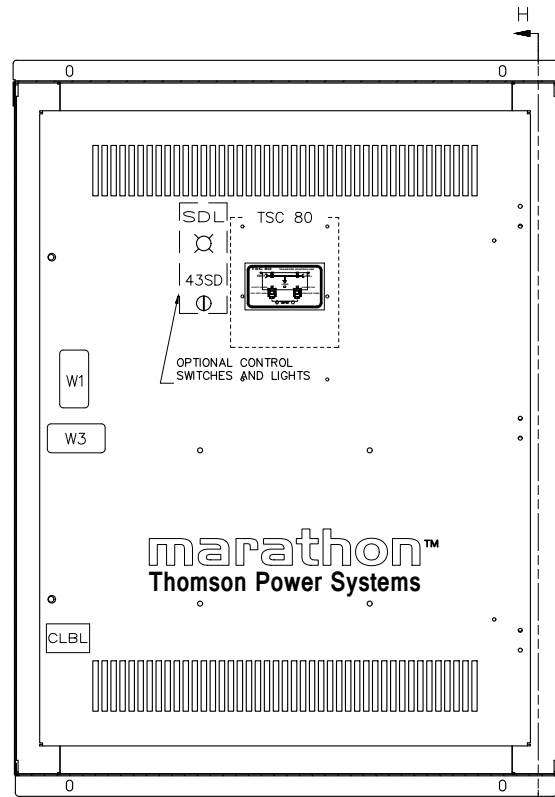


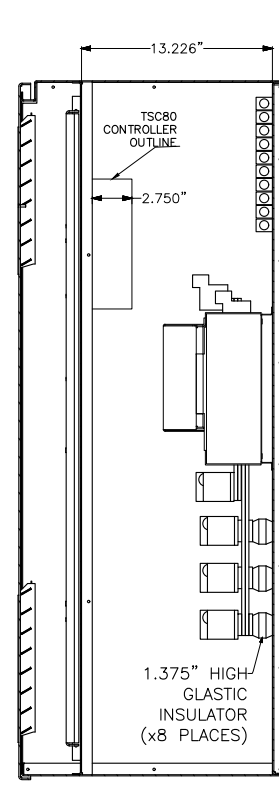
SECTION E-E



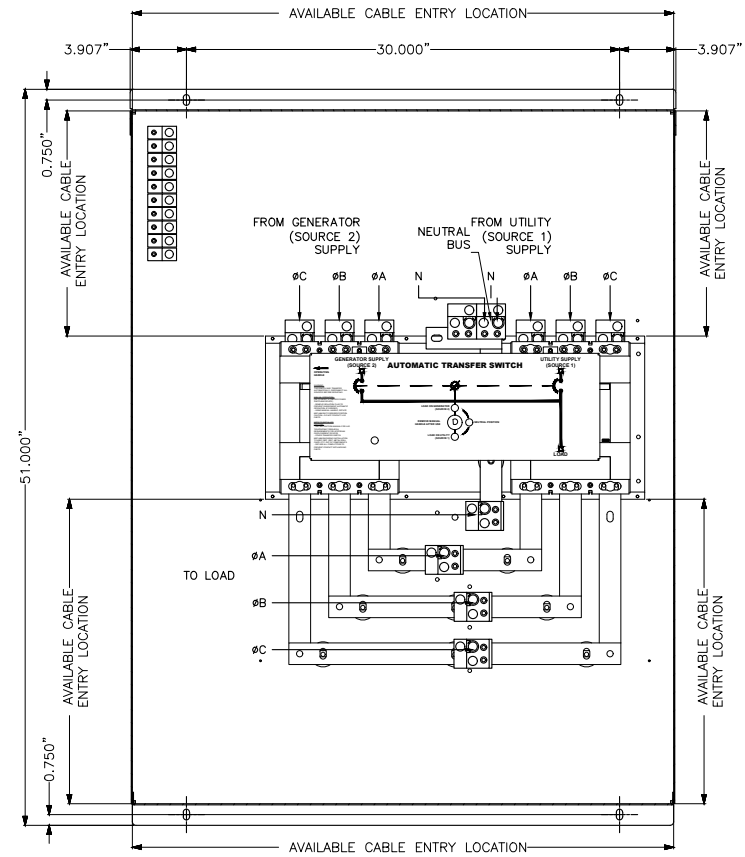
FRONT VIEW



SECTION G-G



SECTION H-H



SECTION F-F

TRANSFER SWITCH OPTIONS

- ENCLOSURE TYPE
- NEMA 3R
C/W GASKETING
- SIZE (AMPS)
- 800A
- 2 POLE
- 3 POLE
- SOLID NEUTRAL

POWER SWITCHING DEVICES ARE MECHANICALLY INTERLOCKED SO THAT ONLY ONE DEVICE IS CLOSED AT A TIME.

FOR TRANSFER SWITCH OPTIONS SEE SCHEMATIC DIAGRAM.

CONNECTION DATA

- UTILITY(SRC1): 1-3C 2/0-500MCM Cu/Al PER PHASE/NEUTRAL
- GEN(SRC2): 1-3C 2/0-500MCM Cu/Al PER PHASE/NEUTRAL
- LOAD: 1-3C 2/0-500MCM Cu/Al PER PHASE/NEUTRAL
- GROUND: 9C #6-250MCM Cu/Al.

SPECIAL REQUIREMENTS

2.5" x 5"

W1

⚠ DANGER PELIGRO

Arc Flash and Shock Hazard

Risque d'Arc Electrique et d'Electrocution

Riesgo de Arco y Choque Electrico

W3

FOIL LABEL (TYPICAL)
BLACK LETTERS ON SILVER BACKGROUND

WARNING

TO ENSURE SAFETY OF PERSONNEL DOOR MUST BE LOCKED CLOSED WHEN USING THE "SERVICE DISCONNECT" SWITCH TO ISOLATE LOAD CIRCUITS.
FASTEN DOOR SECURELY WITH SCREWS BEFORE LOCKING.

NOTE: STANDARD CONFIGURATION SHOWN:
3Ø/4W SYSTEM WITH SOLIDLY GROUNDED NEUTRAL

APPROVED FOR CONSTRUCTION.
DRAWINGS SUBJECT TO CHANGE WITHOUT NOTICE.

- APPROVED FOR CONSTRUCTION
- MASTER COPY REFERENCE COPY OF
- MULTIPLE UNIT WORK ORDER
- RELEASED FOR INFORMATION
- AUTH. BY: OG DATE: 07-06-26

DRAWING No.	REFERENCE DRAWINGS	No.	REVISIONS	BY	AUTH	DATE
		4	LOGO CHANGED	LR	OG	14-01-30
		3	UPDATED VIEWS & DIMENSIONS	SB	BB	09/10/19
		2	UPDATED DIMENSIONS	BMG	OG	08-06-06
		1	UPDATED DIMENSIONS	BMG	OG	08-05-25



AUTOMATIC TRANSFER SWITCH
MODEL TS 840
PHYSICAL LAYOUT & INSTALLATION DETAILS
(TYPICAL)

DRAWINGS AND/OR OTHER TECHNICAL INFORMATION SUPPLIED BY THOMSON POWER SYSTEMS AS A PART OF A SALE OF EQUIPMENT ARE FOR THE PURCHASER'S USE SOLELY IN CONJUNCTION WITH THAT EQUIPMENT, UNLESS SPECIFICALLY AGREED TO OTHERWISE AS A PART OF THE TERMS OF SALE.

CUSTOMER	
CUSTOMER ORDER No.	WORK ORDER No.
DRAWN BY: JBG	AUTH BY: OG
DATE: 08-04-07	REV: 4
DRAWING/FILE No.: 840M017	SHEET: 1/1