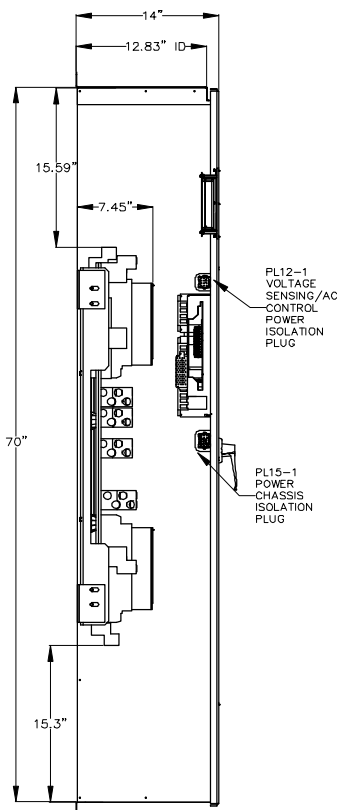
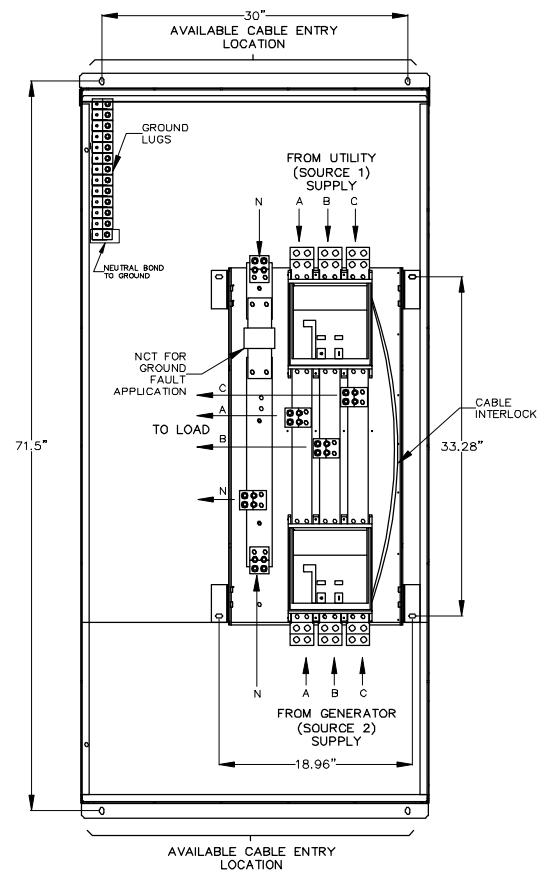


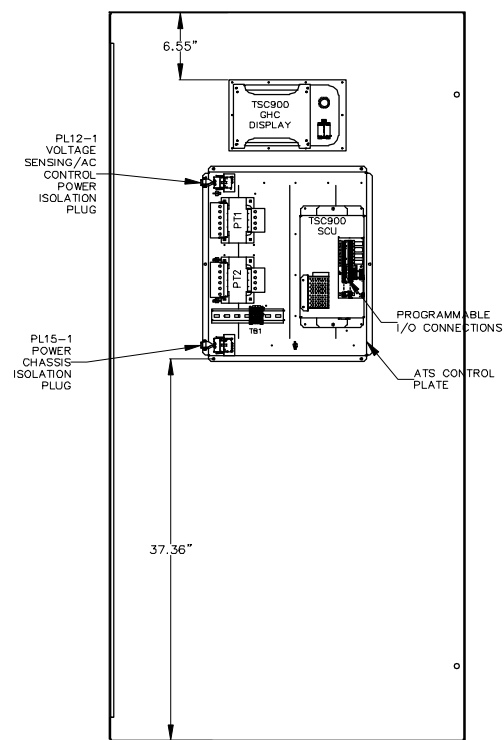
FRONT VIEW



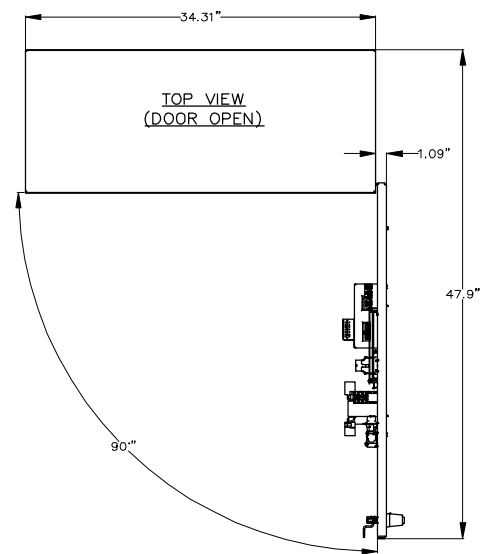
LHS VIEW
(SIDE COVER REMOVED)



INTERIOR FRONT VIEW
(DOOR NOT SHOWN)



VIEWED FROM REAR
(INSIDE) OF DOOR



TOP VIEW
(DOOR OPEN)

SERVICE ENTRANCE ATS - USD					
BASIC MODEL TS87xA	CLOSING AND INTERRUPTING RATING AVAILABLE AMPS (RMS)				
	MAX. VOLTAGE	RATED CURRENT (A)	NO UPSTREAM OVERCURRENT PROTECTION REQUIRED		
TS 87xA-1000	600	1000	200,000	100,000	65,000
TS 87xA-1200	600	1200	200,000	100,000	65,000

STANDARD ATS - GSD					
BASIC MODEL TS87xA	CLOSING AND WITHSTAND RATING AVAILABLE AMPS (RMS)				
	MAX. VOLTAGE	RATED CURRENT (A)	240V	480V	600V
TS 87xA-1000	600	1000	200,000	100,000	65,000
TS 87xA-1200	600	1200	200,000	100,000	65,000

CONNECTION DATA		
1000A ATS	UTILITY (SRC1)	1-4C, 4/0-500MCM Cu/Al PER PHASE
	GENERATOR (SRC2)	1-4C, 4/0-500MCM Cu/Al PER PHASE
	LOAD	1-4C, 4/0-500MCM Cu/Al PER PHASE
	NEUTRAL	1-4C, 4/0-500MCM Cu/Al PER SOURCE
	GROUND	12C, #6-250MCM Cu/Al
1200A ATS	UTILITY (SRC1)	1-4C, 4/0-500MCM Cu/Al PER PHASE
	GENERATOR (SRC2)	1-4C, 4/0-500MCM Cu/Al PER PHASE
	LOAD	1-4C, 4/0-500MCM Cu/Al PER PHASE
	NEUTRAL	1-4C, 4/0-500MCM Cu/Al PER SOURCE
	GROUND	12C, #6-250MCM Cu/Al

- GENERAL NOTES**
- ENCLOSURE FINISH : ASA #61 GREY
 - REFER PROJECT SPECIFIC OPTIONS LIST FOR SELECTED ENCLOSURE TYPE
 - ADD GASKETING FOR NEMA 3R OPTION

2.5" x 5" **WARNING**
PELIGRO

Are Flash and Shock Hazard
Do not touch any part of the circuit
before the door is closed and the
switch is in the OFF position. Do not
touch any part of the circuit before
the door is closed and the switch is
in the OFF position. This equipment
must be installed and serviced only
by qualified electrical personnel
using appropriate safety work
practices and appropriate Personal
Protective Equipment (PPE). Failure
to comply may result in injury or
death. Refer to the NEMA 7E for
minimum PPE requirements.

Risque d'Arcs Electriques et d'Electrocution
Ne pas toucher de la partie du circuit
avant que la porte soit fermee et le
commutateur soit en position
d'arret. Ne pas toucher de la partie
du circuit avant que la porte soit
fermee et le commutateur soit en
position d'arret. Ce materiel doit
etre installe et entretenu par un
personnel qualifie et utilise un
equipement de protection
personnelle approprie. Le non respect
peut entrainer des blessures ou la
mort. Reportez-vous a NEMA 7E pour le
niveau des equipements minimaux PPE.

Riesgo de Arco y Choques Electricos
No tocar ninguna parte del circuito
antes de cerrar la puerta y poner el
interruptor en la posicion de
apagado. No tocar ninguna parte del
circuito antes de cerrar la puerta y
poner el interruptor en la posicion
de apagado. Este equipo solo se
debe instalar y mantener por personal
calificado y utilizar el equipo de
proteccion personal adecuado. No
respetar estas recomendaciones puede
causar lesiones o mortalidad. Consulte la
NEMA 7E para los requisitos
minimos del equipo de proteccion
personal (PPE).

QTY = 1

FOIL LABEL
BLACK LETTERS ON SILVER BACKGROUND

WARNING
TO ENSURE SAFETY OF PERSONNEL DOOR
MUST BE LOCKED CLOSED WHEN USING THE
"SERVICE DISCONNECT" SWITCH TO ISOLATE
LOAD CIRCUITS.
FASTEN DOOR SECURELY WITH SCREWS
BEFORE LOCKING.

QTY = 1

0.75" x 2"
(TYPICAL)
WHITE LETTERS ON
BLACK BACKGROUND

SERVICE DISCONNECT

QTY = 1

SERVICE DISCONNECT
TRANSFER ENERGIZED NEUTRAL DISCONNECTED

QTY = 1

APPROVED FOR CONSTRUCTION
 MASTER COPY REFERENCE COPY OF _____
 MULTIPLE UNIT WORK ORDER
 RELEASED FOR INFORMATION
AUTH. BY: _____ DATE: _____

CROSS REFERENCE LEGEND

50C-C-1	
GRID COORDINATE	
SHEET No.	

DRAWING No.	REFERENCE DRAWINGS	No.	REVISIONS	BY	AUTH	DATE
2	T7 BRKR CHASSIS AND NEUTRAL CHANGED			DJ	OG	17-01-13
1	WIRE HARNESS UPDATED AS PER ECR-0113988			SR	OG	16-07-22



**AUTOMATIC TRANSFER SWITCH
MODEL TS 870**
PHYSICAL LAYOUT & INSTALLATION DETAILS
1000-1200A, 2P/3P, NEMA 1/2/12/3R MOTOR OPERATED, SE

CUSTOMER THOMSON POWER SYSTEMS

CUSTOMER ORDER No. C-XXXXXX	WORK ORDER No. W-XXXXXX
DRAWN BY AP	AUTH BY OG
DATE 16-01-26	REV 2
DRAWING/FILE No. MOS870M202	SHEET 10A