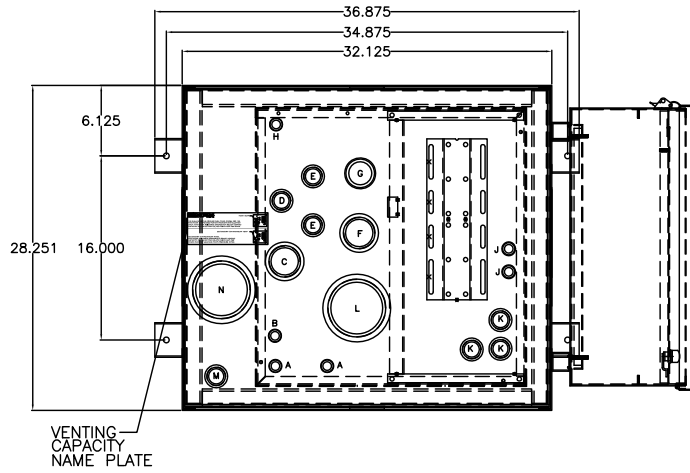


**TANK FITTING SCHEDULE**

PORT	DESCRIPTION	
A	ENGINE SUPPLY DROP TUBE	0.75" NPT, MALE
B	SIPHON DRAIN DROP TUBE	0.75" NPT, MALE
C	OVERFLOW PORT (NOT USED WITH RETURN PUMP)	2.00" NPT, FEMALE
D	ENGINE RETURN PORT	1.00" NPT, FEMALE
E	EXTRA PIPE FLANGE	1.00" NPT, FEMALE
F	TANK VENT PORT	2.00" NPT, FEMALE
G	MANUAL FILL PORT	2.00" NPT, MALE
H	HAND PUMP DROP TUBE	0.75" NPT, MALE
J	PUMP CONNECTION TO TANK	0.75" NPT, MALE
K	FLOATSWITCH MOUNTING PORT	1.00" NPT, FEMALE
L	TANK EMERGENCY VENT	4.00" NPT, FEMALE
M	LEAK SENSOR PORT	1.00" NPT, FEMALE
N	SECONDARY CONTAINMENT EMERGENCY VENT	4.00" NPT, FEMALE
P	RUPTURE BASIN DRAIN	0.375" NPT, FEMALE



**OPTIONS INSTALLED**

- X002**-DELETION OF STD PUMP & MOTOR
- 015**-MANUAL HAND PUMP
- 025**-MANUAL FILL PIPE W/LOCKABLE CAP
- 060**-FUEL STRAINER, Y-TYPE, 1.0"NPT., 20 MESH
- 064**-EMERGENCY VENT CAP, 4.00"NPT., 2.5 P.S.I.
- 065**-TANK DRAIN BALL VALVE
- 066**-SIPHON DRAIN PIPING ASSEMBLY
- 070**-PRIMING TEE & CHECK VALVE ASSEMBLY
- 080**-SOLENOID VALVE, N.C. 115VAC
- 087**-PUMP INLET BALL VALVE
- 180**-WEATHERPROOF MODIFICATIONS
- 191**-FLOATSWITCH IN RUPTURE BASIN
- 192**-RUPTURE BASIN DRAIN BALL VALVE

**OPTIONS INSTALLED**

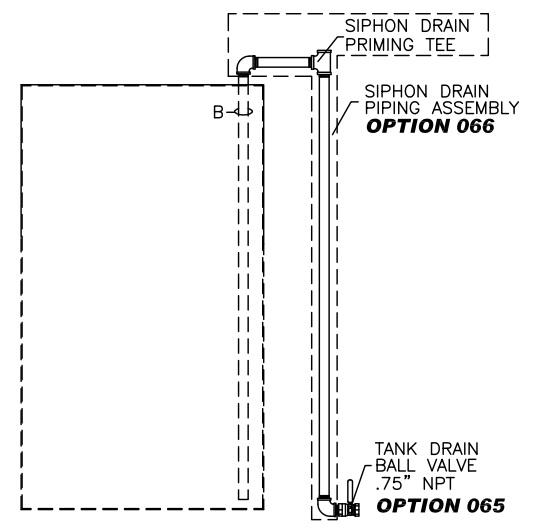
- 215**- SPIRAL LEVEL GAUGE
- 260**- MAIN DISCONNECT SWITCH
- 270**- POWER AVAILABLE PILOT LIGHT
- 280**- PUMP RUN-OFF-AUTO SWITCH
- 311**-LOW FUEL LEVEL ALARM
- 312**-HIGH FUEL LEVEL ALARM
- 325**-HIGH FUEL LEVEL PUMP STOP
- 334**-ALARM HORN WITH SILENCE PUSHBUTTON
- 340**- PUMP RUNNING LIGHT
- 345**- DUPLEX PUMP CONTROLLER
- 390**-OVERFLOW RETURN PUMP & CONTROLLER

HIGH TOP USED W/ SINGLE PUMP 3/4 H.P. OR DUPLEX PUMPS/MOTORS

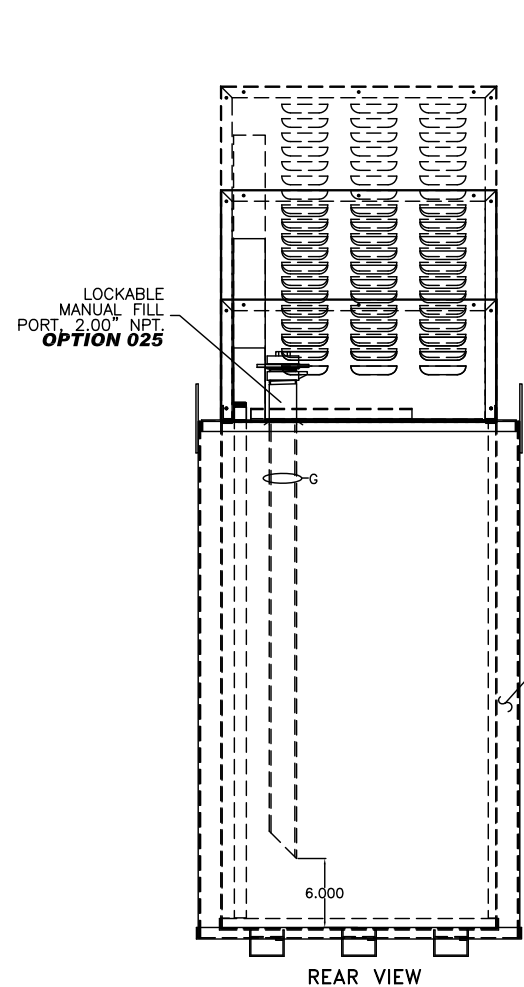
**OPTIONS SHIPPED LOOSE**

- 040**-WALL MOUNTING BRACKET
- 062**- DUPLEX BASKET FUEL STRAINER, 1.0" NPT
- 063**- VENT CAP
- 087**- MANUAL SHUT-OFF BALL VALVE .50"NPT
- 088**- MANUAL SHUT-OFF BALL VALVE 1.00"NPT
- 090**- FOOT VALVE 1.00" NPT
- 093**- FUSIBLE LINK VALVE 1.50" NPT
- 103**-FLOW GAUGE, 1.00"NPT, 2-20GPM
- 286**- PRESSURE DIFFERENTIAL SWITCH FOR STRAINER

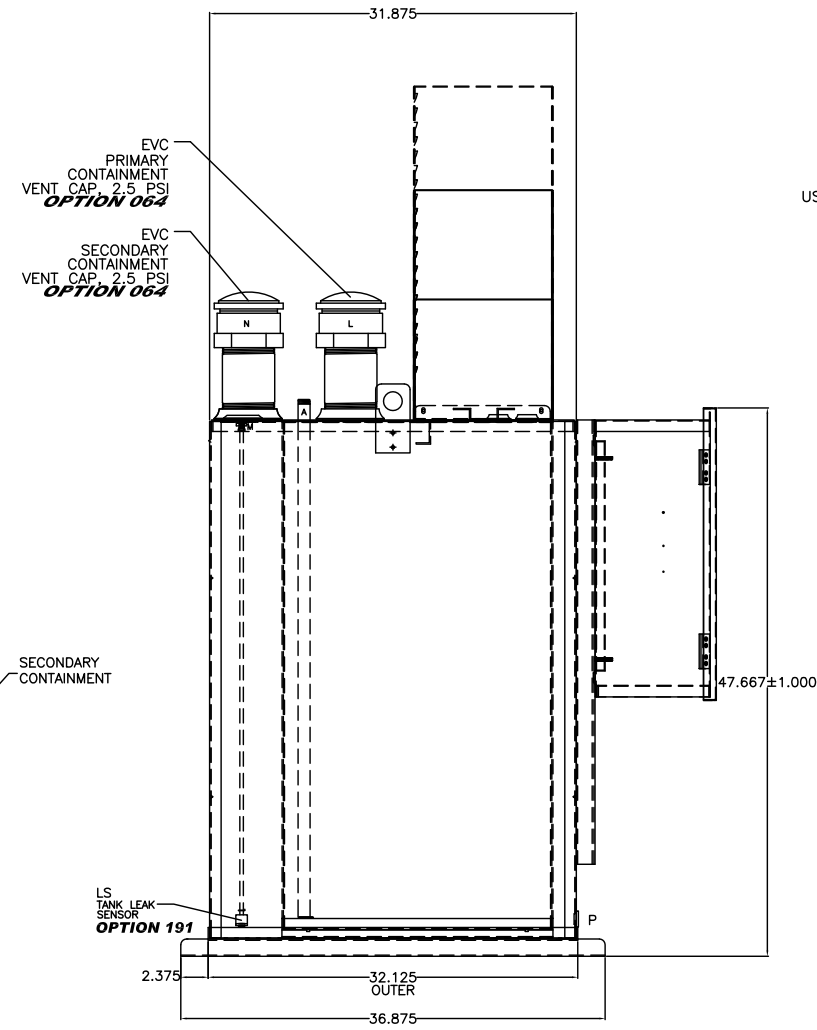
- NOTES:
- 1) CONSTRUCTION: 12 GA. H.R.S.
  - 2) **LISTING: UL 142**
  - 3) RATING: ATMOSPHERIC TANK TESTED TO 3 PSI
  - 4) FINISH: TANK POWDER COATED BONE WHITE  
EQUIPMENT COVER POWDER COATED BONE WHITE
  - 5) DUE TO SYSTEM COMPLEXITY, SOME COMPONENTS MAY NOT BE VISIBLE IN ALL VIEWS
  - 6) ALL DIMENSIONS ±.125"



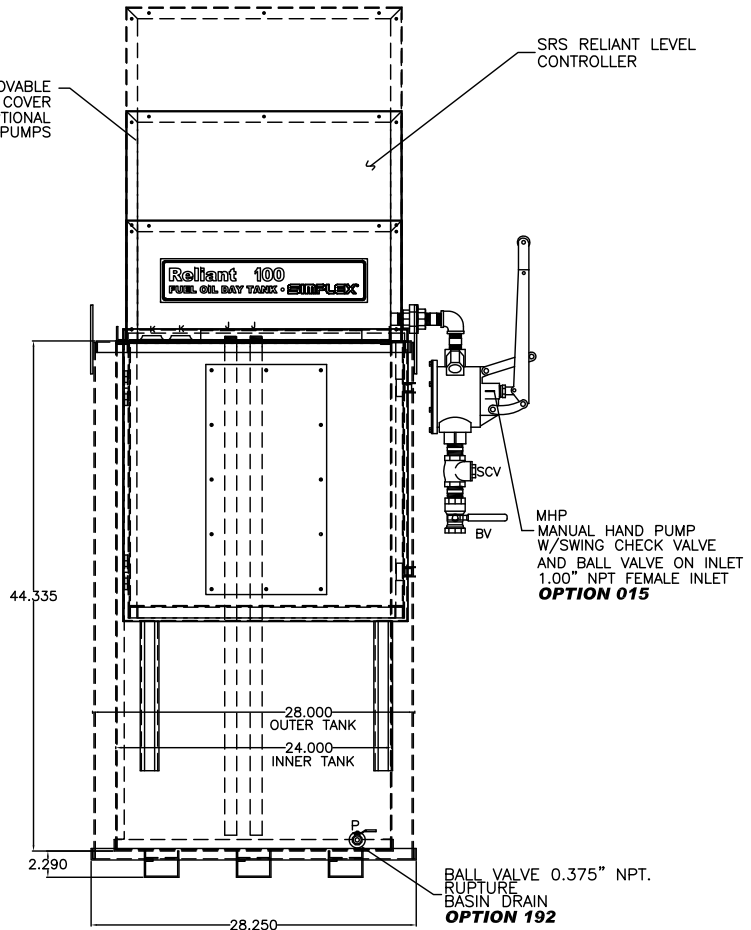
**SIPHON DRAIN DETAIL**



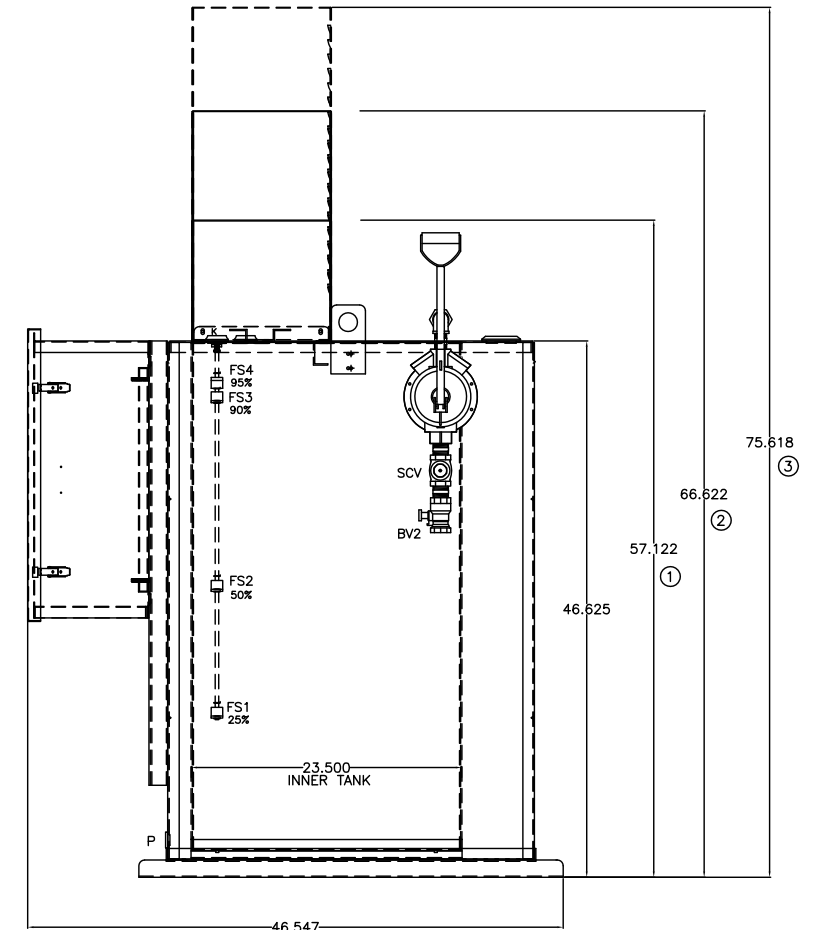
**REAR VIEW**



**LEFT SIDE VIEW**



**FRONT VIEW**



**RIGHT SIDE VIEW**

DAY TANK SHOWN WITH STANDARD CONTROL SECTION AND OPTIONAL DUPLEX PUMP/LARGE PUMP SECTION SEE TANK HEIGHT.

THE INFORMATION HEREON IS THE PROPERTY OF SIMPLEX, INC., AND/OR ITS SUBSIDIARIES. WITHOUT WRITTEN PERMISSION ANY COPYING, TRANSMITTAL TO OTHERS AND USE EXCEPT THAT FOR WHICH IT IS LOANED IS PROHIBITED. DESIGN SUBJECT TO CHANGE WITHOUT NOTICE. ©2010 SIMPLEX, INC. ALL RIGHTS RESERVED.

**SIMPLEX** SPRINGFIELD, ILLINOIS

SCALE :	APPROVED BY :	DRAWN BY : RER
DATE : 08-10-10		REVISED :
RELIANT 100 FUEL OIL DAY TANK PICTORIAL WITH SIDE BOX		
STANDARD	DRAWING NUMBER 211969	